



PATTULLO BRIDGE REPLACEMENT

Downtown New Westminster Businesses

June 17, 2026



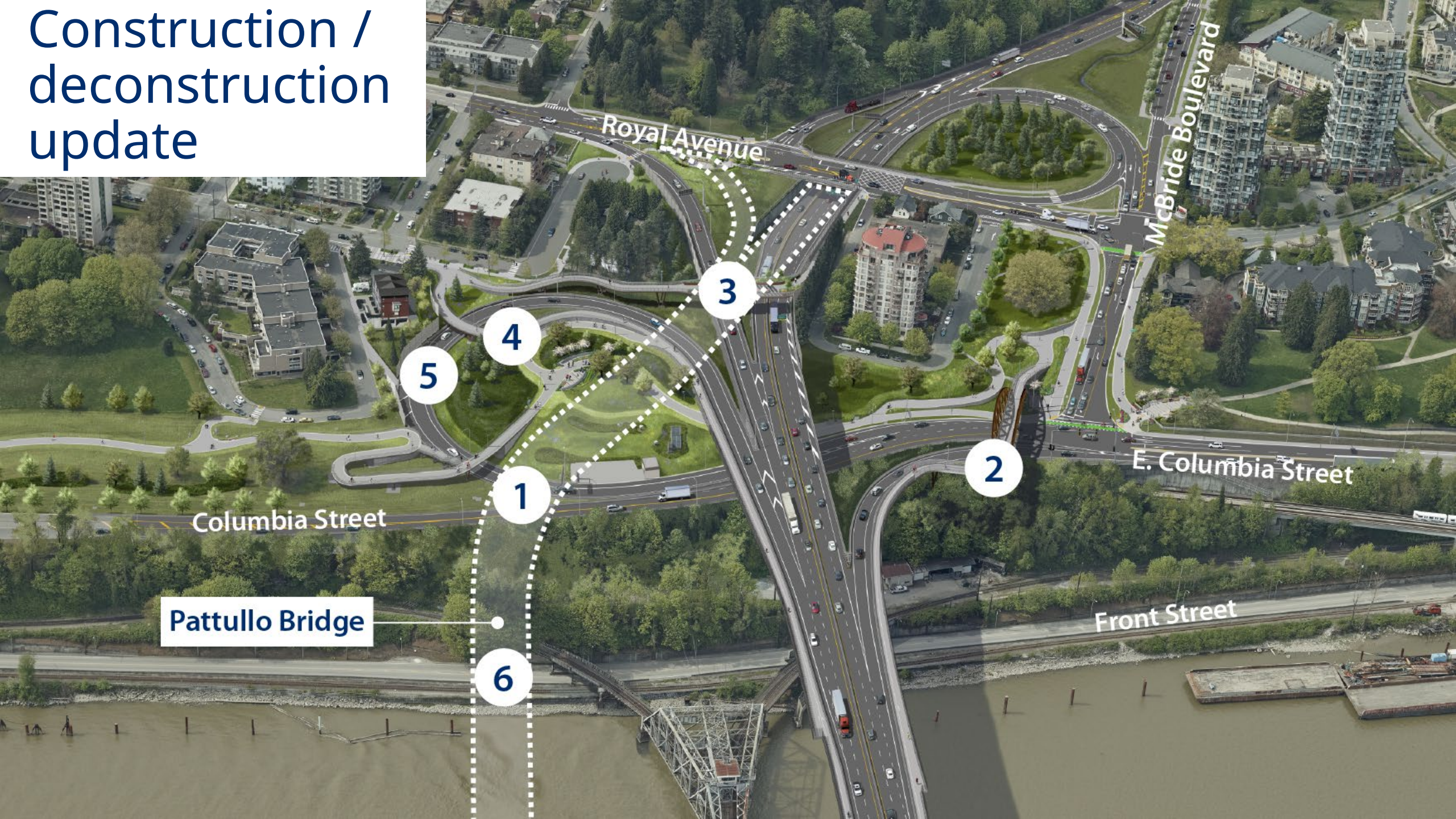
transportation
investment
corporation



Agenda

- Construction update
- stal'əwəsəm Bridge closures
- Deconstruction update and Front Street Truck Route closure
- Communications and engagement
- Discussion

Construction / deconstruction update



Pattullo Bridge

Columbia Street

Royal Avenue

E. Columbia Street

McBride Boulevard

Front Street

5

4

1

3

2

6



MUP route at opening
(both directions open)



Existing MUP/sidewalk network



New MUP network (open)



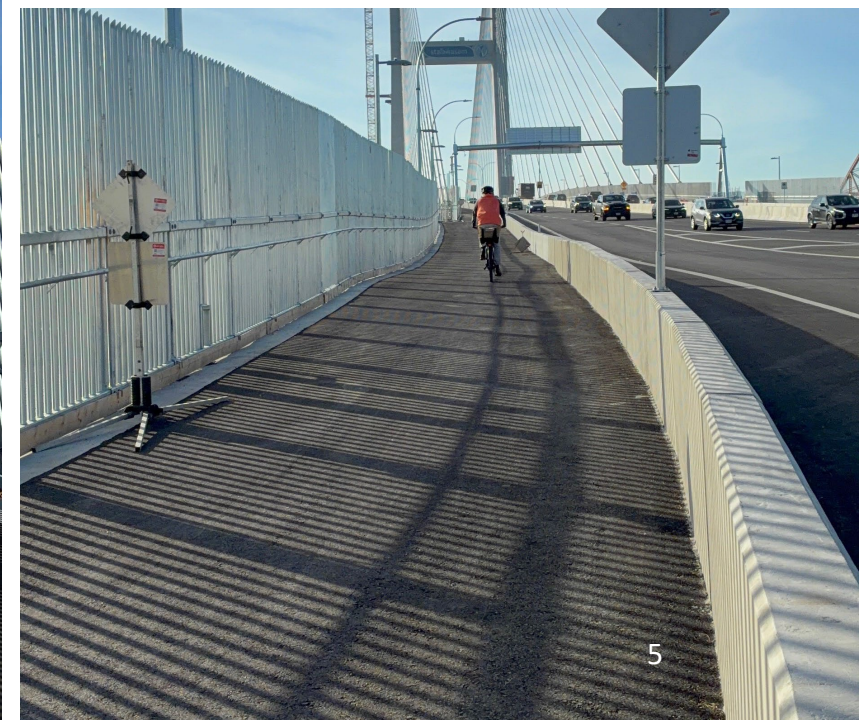
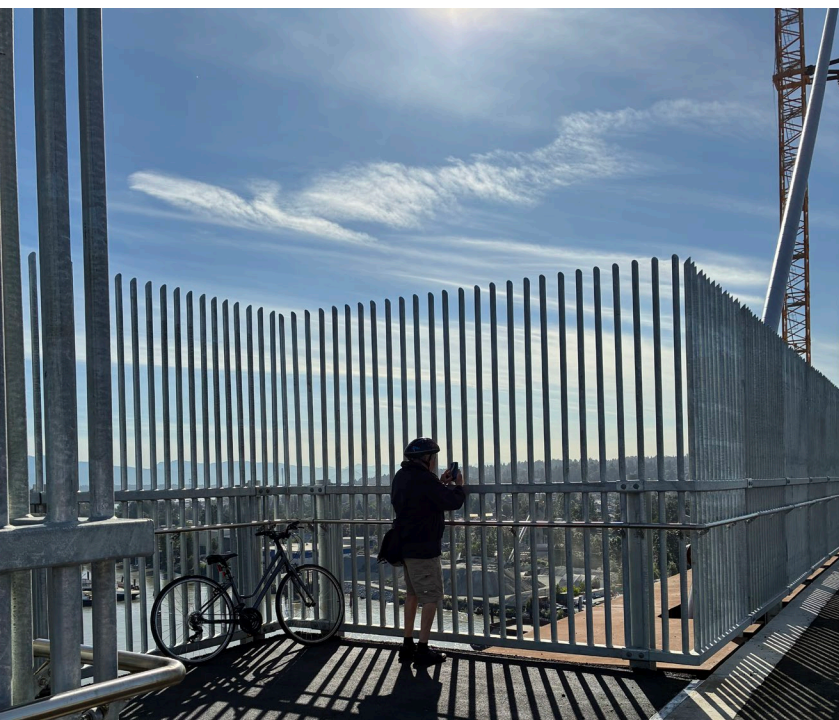
MUP network (under construction)



Central Valley Greenway detour

Existing BC Parkway MUP





Columbia Street on-ramp

- Bridge deconstruction over Columbia complete
- Columbia on-ramp scheduled to open late summer



Future traffic impacts

- Project team trying to minimize closures as much as possible
- Daytime / nighttime lane closures required
- Some full or directional closures required
- We will communicate in a timely manner



Deconstruction update

- Complete: bridge removal over Columbia in New West and Highway 17 in Surrey
- Underway: deconstruction of Pattullo Bridge south approach concrete spans
- Underway: works for removal of the middle arch span



Front Street Truck Route closure

- Closure of Front Street required for approx. 6 months starting in August
- Needed for construction of retaining wall along Front and bridge deconstruction over Front and the railway lines
- May be continuous or split into two shorter closures



Front Street Truck Route closure signage

- **Advanced notice signage** begins at Richmond & Columbia and Royal & Columbia.
- **Digital Message Sign locations:**
 - Marine Way before Nelson Ave Intersection
 - Stewardson Way under pedestrian overpass
 - Stewardson Way in Gore area at 12 St. intersection
 - E. Columbia St. before Richmond Street intersection
 - Brunette Ave. before Braid Street intersection
 - Queensborough connector at Howe Street Exit Ramp



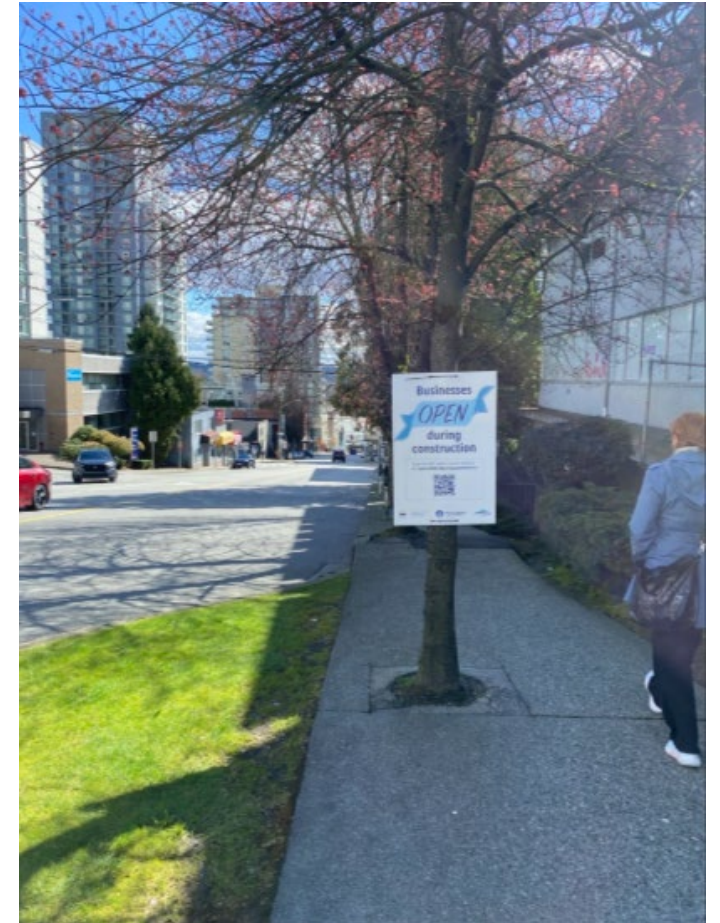
Front Street Truck Route information

- Front Street Truck Route closed
- Front Street Mews open
- Access to downtown New Westminster businesses maintained
- Columbia Street is not a truck route (enforcement)
- Truck detour route map
- Access downtown New West map



Front Street Truck Route communications

- Regional road signage
- Digital billboards
- Social posts
- Traffic media advisories
- Outreach to commercial vehicle industry
- Door-to-door outreach / quarterly meetings with downtown businesses



Downtown New Westminster Parking and Access Map

- Columbia Street and Front Street Mews Open
- Front Street Truck Route Closed Starting Summer 2026



PATTULLO BRIDGE
REPLACEMENT



PATTULLO BRIDGE
REPLACEMENT

Discussion



Thank you



transportation
investment
corporation



**PATTULLO BRIDGE
REPLACEMENT**