



Directional weekend closures of Highway 17 between Bridgeview Drive and Tannery Road

March 10, 2026

Starting the weekend of Friday, March 13, and continuing for three consecutive weekends, Fraser Crossing Partners will be conducting demolition activities associated with Pattullo Bridge deconstruction work on Highway 17 between Tannery Road and Bridgeview Drive. This work will involve the removal and demolition of the bridge deck, girders and columns above Highway 17 and adjacent to the roadways on the south approach.

While this work is underway, directional closures of Highway 17 will be required to allow crews to safely remove bridge components using heavy equipment and to transport materials from the site, on the following weekends:

- **Eastbound:** Friday, March 13 at 9 p.m. until Monday, March 16 at approximately 5 a.m.
- **Westbound:** Friday, March 20 at 9 p.m. until Monday, March 23 at approximately 5 a.m.
- **Eastbound and westbound:** Friday, March 27 at 9 p.m. until Monday, March 30 at approximately 5 a.m.

Confirmation of the Highway 17 westbound and eastbound closures will be communicated in advance via traffic media and posted on drivebc.ca. Please watch for signage indicating when closures and detours will be in place.

Access for emergency responders and cyclists will not be maintained while closures are in place. Detour routes will be clearly marked and are as follows (shown in the graphics below):

- **Highway 17 eastbound** – drivers will be detoured at Tannery Road to 120 Street, King George Boulevard, and will access Highway 17 eastbound via Bridgeview Drive.
- **Highway 17 westbound** – drivers will be detoured at Bridgeview Drive to King George Boulevard, 120 Street, and Tannery Road to continue westbound travel.

Contact the Project



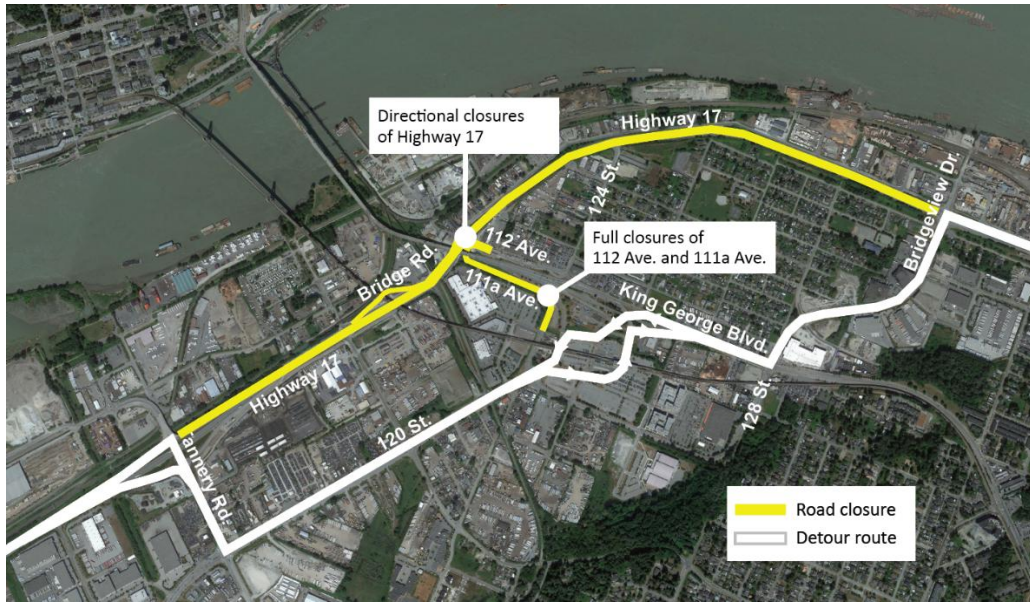
24/7 Phone Line
1-844-815-6149



Project Information
pattullobridgereplacement.ca
pattullobridgeproject@gov.bc.ca



Work on the Project
bcib.ca
info@bcib.ca



All traffic pattern changes will be well signed, and traffic control personnel will be on site to assist as required.

What to Expect



Timing

Starting on the weekend of Friday, March 13, for three consecutive weekends: March 13 to March 16; March 20 to March 23; and March 27 to March 30.



Hours of Work

Work activities will take place 24 hours a day from approximately 9 p.m. on Friday night to 5 a.m. on Monday morning for each of the three consecutive weekends.



Traffic

Directional weekend closures of Highway 17 will be required. Drivers will be detoured at Tannery Road and Bridgeview Drive while closures of Highway 17 are in effect. All traffic pattern changes and detour routes will be well signed, and traffic control personnel will be on site to assist as required.



Impacts/Interruptions

Drivers may experience longer than normal travel times due to the detours. Nearby residents will hear noise associated with deconstruction activities.

We appreciate your patience while we complete this work. If you have any questions, please email info@fcgp.ca or call the 24/7 construction information phone line: 1-844-815-6149. For more information about the Project, visit pattullobridgereplacement.ca.

Contact the Project



24/7 Phone Line
1-844-815-6149



Project Information
pattullobridgereplacement.ca
pattullobridgeproject@gov.bc.ca



Work on the Project
bcib.ca
info@bcib.ca