



transportation
investment
corporation



PATTULLO BRIDGE
REPLACEMENT



Overnight closures of Bridge Connector southbound

January 19, 2026

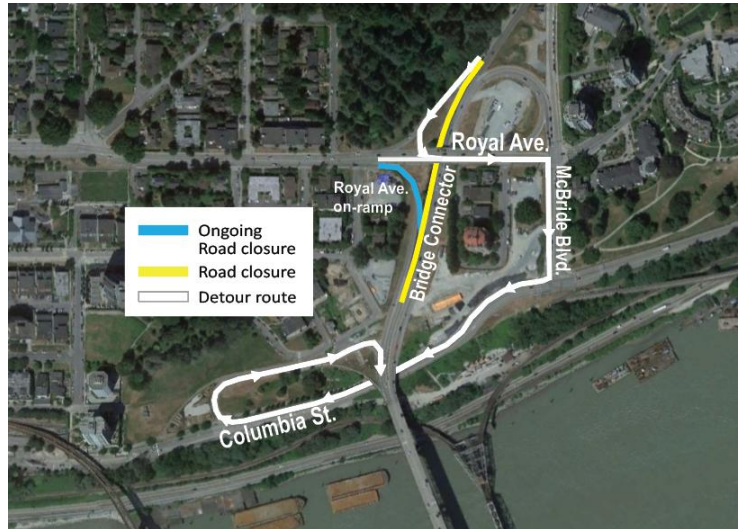
Starting tonight, January 19, Fraser Crossing Partners will require overnight closures of the southbound Bridge Connector in New Westminster for approximately three nights.

These closures are required for the installation of drainage works in the Bridge Connector and Royal Avenue on-ramp area.

Drivers on Bridge Connector or eastbound on Royal Avenue going to Surrey will be detoured to the Columbia Street loop-ramp to access the Pattullo Bridge, including emergency vehicles.

Detour signage will be in place and traffic control personnel will be on site to assist as needed.

The Royal Avenue on-ramp is currently closed. For more information about bridge opening, visit the Project website at pattullobridgereplacement.ca/construction/bridge-opening or [click here](#).



What to Expect



Timing

Starting tonight, Monday, January 19 for approximately three nights.



Hours of Work

9 p.m. – 5 a.m.



Traffic

Overnight closures of the southbound Bridge Connector will be required. The Royal Avenue on-ramp is currently closed. All traffic pattern changes and detours will be well signed, and traffic control personnel will be on site to assist as needed.



Impacts/Interruptions

Drivers may experience longer than normal travel times due to detours. Nearby residents may hear noise associated with the construction activities.

We appreciate your patience while we complete this work. If you have any questions about this work, please email info@fcgp.ca or call the 24/7 construction information phone line: 1-844-815-6149. For more information about the Project, visit pattullobridgereplacement.ca.

Contact the Project



24/7 Phone Line
1-844-815-6149



Project Information

Website: pattullobridgereplacement.ca
Twitter: [@pattulloproject](https://twitter.com/pattulloproject)
Email: pattullobridgeproject@gov.bc.ca



Work on the Project

bcib.ca
info@bcib.ca