



transportation  
investment  
corporation



PATTULLO BRIDGE  
REPLACEMENT



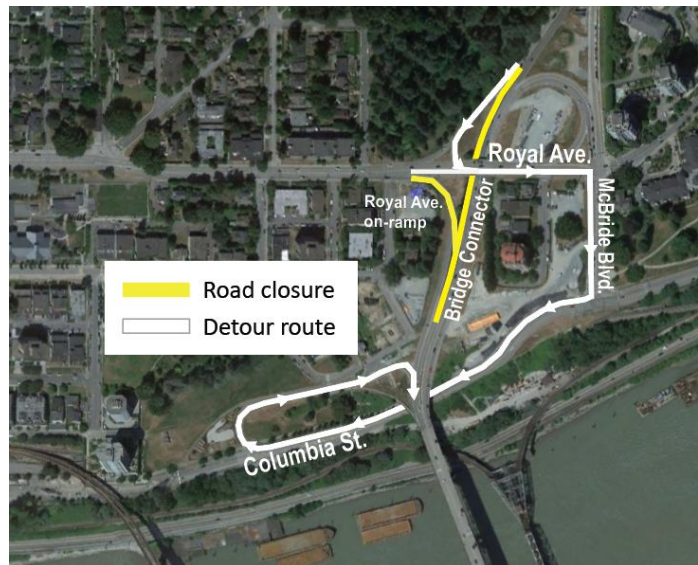
# Overnight closure of Bridge Connector southbound and Royal Avenue on-ramp

January 16, 2026

Tonight, January 16, Fraser Crossing Partners will require an overnight closure of the southbound Bridge Connector and the Royal Avenue on-ramp in New Westminster. This closure is required for the installation of drainage works.

Drivers on Bridge Connector or eastbound on Royal Avenue going to Surrey will be detoured to the Columbia Street loop-ramp to access the Pattullo Bridge, including emergency vehicles.

Detour signage will be in place and traffic control personnel will be on site to assist as needed.



## What to Expect



### Timing

Tonight, Friday, January 16.



### Hours of Work

9 p.m. – 5 a.m.



### Traffic

An overnight closure of the southbound Bridge Connector and the Royal Avenue on-ramp will be required. All traffic pattern changes and detours will be well signed, and traffic control personnel will be on site to assist as needed.



### Impacts/Interruptions

Drivers may experience longer than normal travel times due to detours. Nearby residents may hear noise associated with the construction activities.

We appreciate your patience while we complete this work. If you have any questions about this work, please email [info@fcgp.ca](mailto:info@fcgp.ca) or call the 24/7 construction information phone line: 1-844-815-6149. For more information about the Project, visit [pattullobridgereplacement.ca](http://pattullobridgereplacement.ca).

## Contact the Project



**24/7 Phone Line**  
1-844-815-6149



### Project Information

Website: [pattullobridgereplacement.ca](http://pattullobridgereplacement.ca)  
Twitter: [@pattulloproject](https://twitter.com/pattulloproject)  
Email: [pattullobridgeproject@gov.bc.ca](mailto:pattullobridgeproject@gov.bc.ca)



### Work on the Project

[bcib.ca](http://bcib.ca)  
[info@bcib.ca](mailto:info@bcib.ca)