



transportation
investment
corporation



PATTULLO BRIDGE
REPLACEMENT



Overnight directional closures of Highway 17 for the installation of new overhead signs

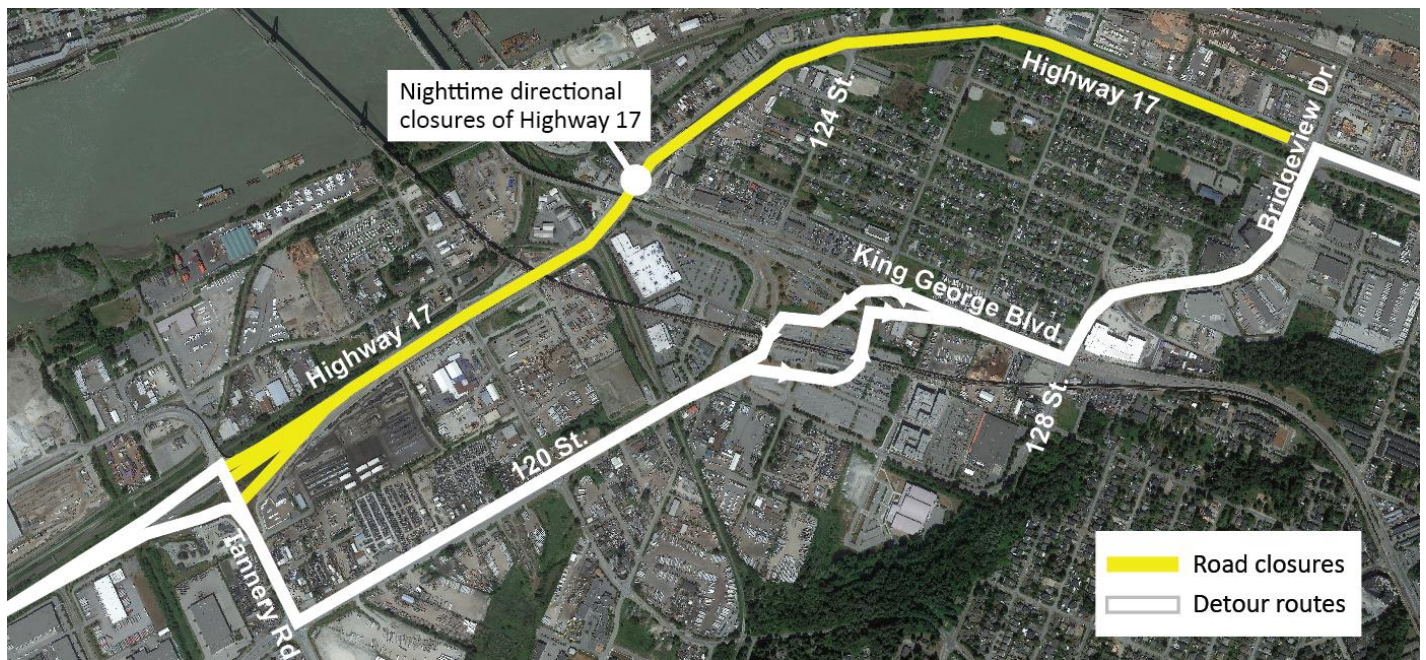
January 5, 2026

Starting the night of Monday, January 5, Fraser Crossing Partners will be installing new overhead guide signs alongside Highway 17. To complete this work, approximately three overnight (9 p.m. to 5 a.m.) directional closures of Highway 17 will be required over a two-week period. Only one direction will be closed at a time.

Confirmation of the Highway 17 westbound and eastbound closures will be communicated in advance via traffic media and posted on drivebc.ca. Please watch for signage indicating when closures and detours will be in place.

Access for cyclists will not be maintained while closures are in place. Detour routes will be clearly marked and are as follows (shown below):

- **Highway 17 westbound** – drivers will be detoured at Bridgeview Drive to King George Boulevard, 120 Street, and Tannery Road to continue westbound travel.
- **Highway 17 eastbound** – drivers will be detoured at Tannery Road to 120 Street, King George Boulevard, and will access Highway 17 eastbound via Bridgeview Drive.



For more information about the ongoing bridge deck construction activities to take place over Highway 17, please visit the Current Works page at pattullobridgereplacement.ca or [click here](#).

Contact the Project



24/7 Phone Line
1-844-815-6149



Project Information
pattullobridgereplacement.ca
pattullobridgeproject@gov.bc.ca



Work on the Project
bcib.ca
info@bcib.ca



transportation
investment
corporation



**PATTULLO BRIDGE
REPLACEMENT**



What to Expect



Timing

Starting Monday, January 5 for approximately three nights over a two-week period.



Hours of Work

Directional closures of Highway 17 will be implemented between 9 p.m. and 5 a.m.

Timing and durations of closures will be indicated on road signage and communicated in advance.



Traffic

Overnight directional closures of Highway 17 will be required. Drivers will be detoured at Tannery Road and Bridgeview Drive while directional closures of Highway 17 are in effect. All traffic pattern changes, and detour routes will be well signed, and traffic control personnel will be on site to assist when required.



Impacts/Interruptions

Drivers and cyclists may experience longer than normal travel times due to the detours.

We appreciate your patience while we complete this work. If you have any questions about this work, please email info@fcgp.ca or call the 24/7 construction information phone line: 1-844-815-6149. For more information about the Project, visit pattullobridgereplacement.ca.

Contact the Project



24/7 Phone Line
1-844-815-6149



Project Information
pattullobridgereplacement.ca
pattullobridgeproject@gov.bc.ca



Work on the Project
bcib.ca
info@bcib.ca