



transportation
investment
corporation



PATTULLO BRIDGE
REPLACEMENT



Weekend closure of Highway 17 westbound between Bridgeview Drive and Tannery Road

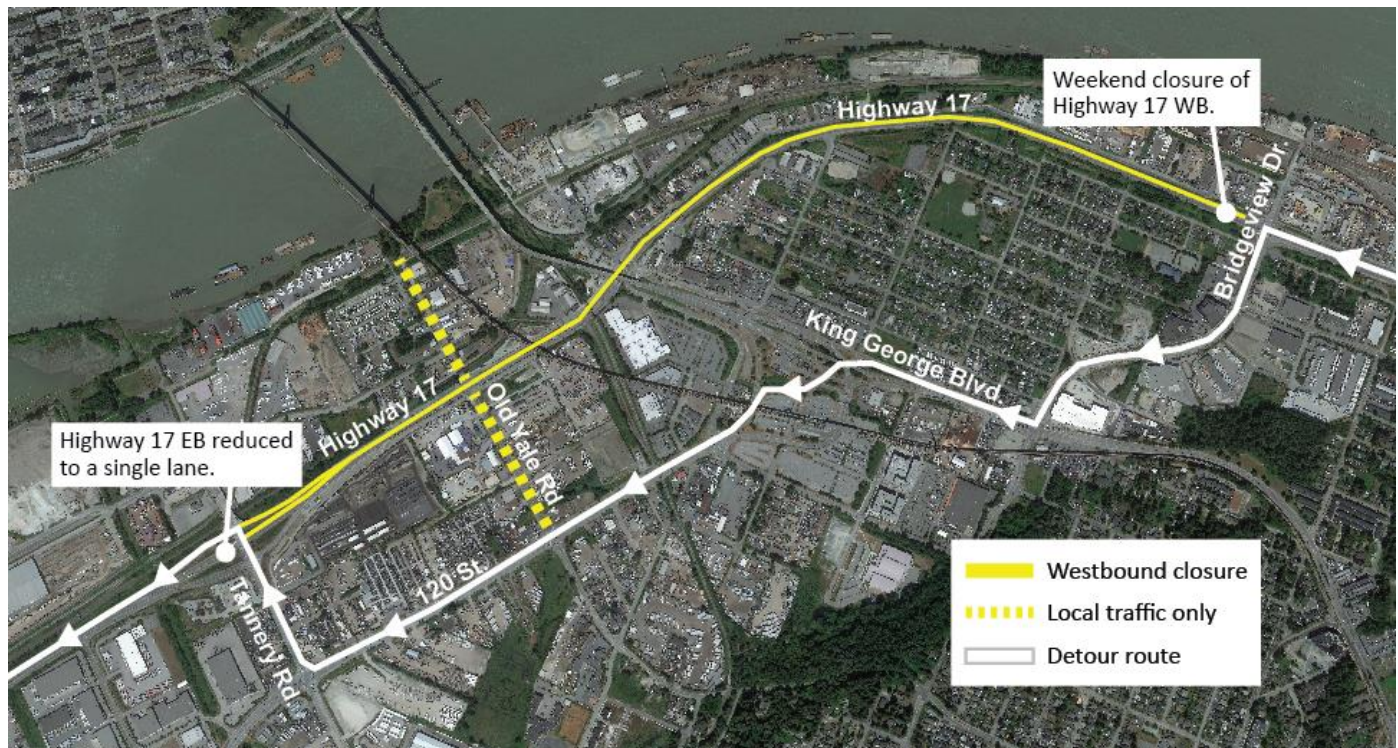
May 26, 2025

As part of the Pattullo Bridge Replacement Project, Highway 17 is being grade-separated over Old Yale Road. From 9 p.m. this Friday, May 30, to 5 a.m. on Monday, June 2, Highway 17 westbound will be closed between Bridgeview Drive and Tannery Road for crews to complete roadwork before opening the westbound half of the new Old Yale Road overpass. Highway 17 eastbound will also be reduced to a single lane.

During the closure, drivers looking to travel westbound on Highway 17 will be detoured at Bridgeview Drive to travel on King George Boulevard, 120 Street, and Tannery Road, then reconnect with Highway 17.

Access for emergency responders and cyclists will not be maintained. Road signage will be in place and detour routes will be clearly marked (as shown below). All turning movements between Old Yale Road and Highway 17 will be permanently removed; Old Yale Road will remain open to local traffic only.

Highway 17 westbound traffic will shift onto the completed Old Yale Road overpass by 5 a.m. on Monday, June 2.



Contact the Project



24/7 Phone Line
1-844-815-6149



Project Information
pattullobridgereplacement.ca
pattullobridgeproject@gov.bc.ca



Work on the Project
bcib.ca
info@bcib.ca



transportation
investment
corporation



**PATTULLO BRIDGE
REPLACEMENT**



More information is [available here](#) or on the Current Works page of the Project website at pattullobridgereplacement.ca.

What to Expect



Timing

9 p.m. on Friday, May 30 until 5 a.m. on Monday, June 2.



Hours of Work

Work will take place 24 hours a day. As much as possible, noisy work activities will be completed during the day.



Traffic

Highway 17 westbound drivers will be detoured at Bridgeview Drive to travel on King George Boulevard, 120 Street, then Tannery Road to reconnect with Highway 17. Highway 17 eastbound will also be reduced to a single lane. Old Yale Road will remain open to local traffic. Traffic control personnel will be on site to direct traffic if stoppages are required. All traffic pattern changes and detour routes will be well signed.



Impacts/Interruptions

Drivers may experience longer than normal travel times due to the detour. Nearby residents and businesses may hear noise associated with the roadwork. We appreciate your patience while this work is underway.

If you have any questions about this work, please email info@fcgp.ca or call the 24/7 phone line: 1-844-815-6149.

For more information about the Project, please visit pattullobridgereplacement.ca.

Contact the Project



24/7 Phone Line
1-844-815-6149



Project Information
pattullobridgereplacement.ca
pattullobridgeproject@gov.bc.ca



Work on the Project
bcib.ca
info@bcib.ca