



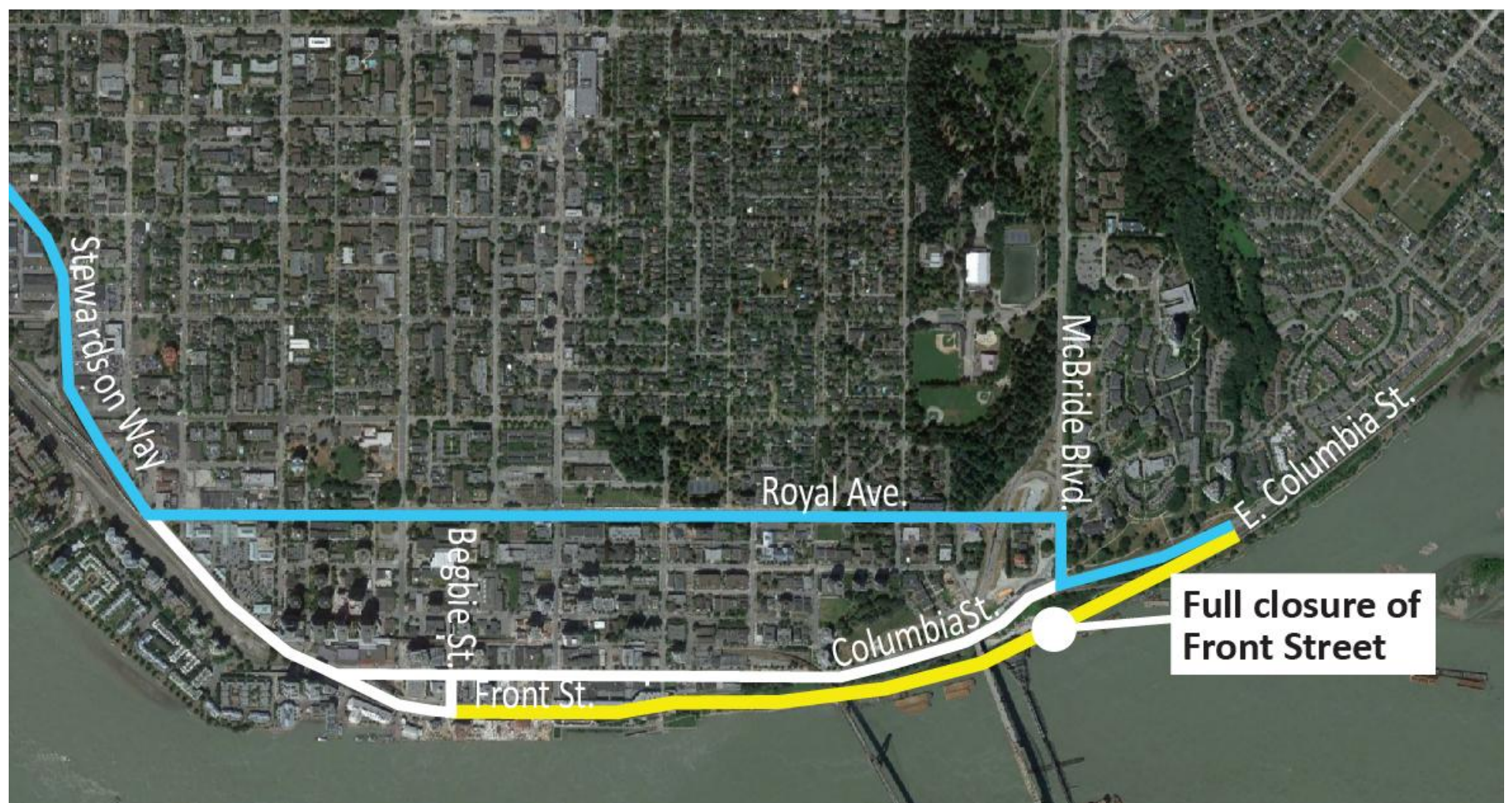
Detour sheet




Regular traffic detour routes during Front Street closures

Throughout construction, Fraser Crossing Partners will need to implement full closures of Front Street. These full closures are required for crews to complete bridge deck construction activities across the roadway between the bridge foundations on either side of Front Street. Front and Columbia will not be closed at the same time.

While full closures are in effect, drivers will be detoured to Columbia Street as shown below. Commercial vehicles will be detoured to designated truck routes such as Royal Avenue and Braid Street/E 8th Avenue during the day, and 10th Avenue both day and night. **Access to and from all businesses on Columbia Street and Front Street Mews will remain open at all times via 4th Street And 6th Street.**

All traffic pattern changes and detours will be well signed, and traffic control personnel will be on site to assist when necessary.



-  Road closure
-  Regular traffic detour route
-  Daytime commercial vehicle detour route

Work activities are being planned so that there are not concurrent closures on key roadways in New Westminster.

Additional information regarding the Front Street closures and bridge construction is available on the Current Works and Information Sheets pages at pattullobridgereplacement.ca.

If you have questions or need assistance, please email info@fcgp.ca or call the 24/7 phone line: 1-844-815-6149.

Contact the Project



24/7 Phone Line
1-844-815-6149



Project Information
Website: pattullobridgereplacement.ca
Twitter: [@pattulloproject](https://twitter.com/pattulloproject)
Email: pattullobridgeproject@gov.bc.ca



Work on the Project
bcib.ca
info@bcib.ca