



Overnight closures of Highway 17, 112/111a Avenue, and Bridge Road to install drainage on the new bridge deck

April 10, 2025

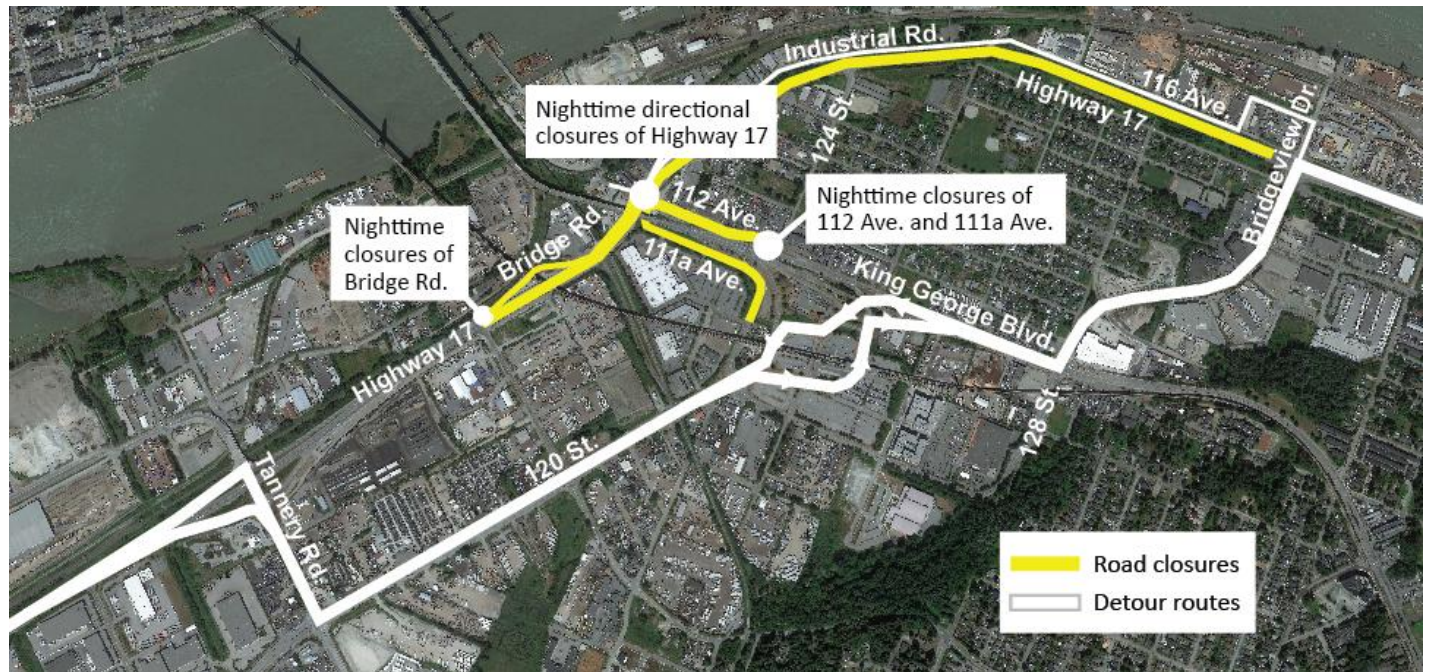
Starting the week of April 14, Fraser Crossing Partners will begin installing drainage onto new bridge deck across Highway 17.

While this work is underway, overnight (9 p.m. to 5 a.m.) directional closures of Highway 17 will be required. When Highway 17 eastbound closures are in place, closures of 112/111a Avenue will also be required from 7 p.m. to 5 a.m. When Highway 17 westbound closures are in place, closures of Bridge Road will be required from 7 p.m. to 5 a.m.

Confirmation of the Highway 17 westbound and eastbound closures will be communicated in advance via traffic media, and posted on <https://www.drivebc.ca/>. Please also watch for signage indicating when closures and detours will be in place.

Access for emergency responders and cyclists will not be maintained while closures are in place and will need to follow detour routes. Detour routes will be clearly marked and are as follows (shown below):

- **Highway 17 westbound** – drivers will be detoured at Bridgeview Drive to King George Boulevard, 120 Street, and Tannery Road to continue westbound travel.
- **Highway 17 eastbound** – drivers will be detoured at Tannery Road to 120 Street, King George Boulevard, and will access Highway 17 eastbound via Bridgeview Drive.



Contact the Project



24/7 Phone Line
1-844-815-6149



Project Information
pattullobridgereplacement.ca
pattullobridgeproject@gov.bc.ca



Work on the Project
bcib.ca
info@bcib.ca



What to Expect



Timing

Starting the week of April 14 and continuing for approximately one week.



Hours of Work

When required, directional closures of Highway 17 will be implemented between 9 p.m. and 5 a.m.

Closures of 112/111a Avenue and Bridge Road will be implemented between 7 p.m. and 5 a.m.

Timing and durations of closures will be indicated on road signage and communicated in advance.



Traffic

Overnight closures of Highway 17, Bridge Road, and 112/111a Avenue will be required. Drivers will be detoured at Tannery Road and Bridgeview Drive while closures of Highway 17 are in effect. All traffic pattern changes, and detour routes will be well signed, and traffic control personnel will be on site to assist when required.



Impacts/Interruptions

Drivers may experience longer than normal travel times due to the detours. Nearby residents and businesses may hear intermittent noise from construction activities.

We appreciate your patience while we complete this work. If you have any questions about this work, please email info@fcgp.ca or call the 24/7 construction information phone line: 1-844-815-6149. For more information about the Project, visit pattullobridgereplacement.ca.

Contact the Project



24/7 Phone Line
1-844-815-6149



Project Information
pattullobridgereplacement.ca
pattullobridgeproject@gov.bc.ca



Work on the Project
bcib.ca
info@bcib.ca