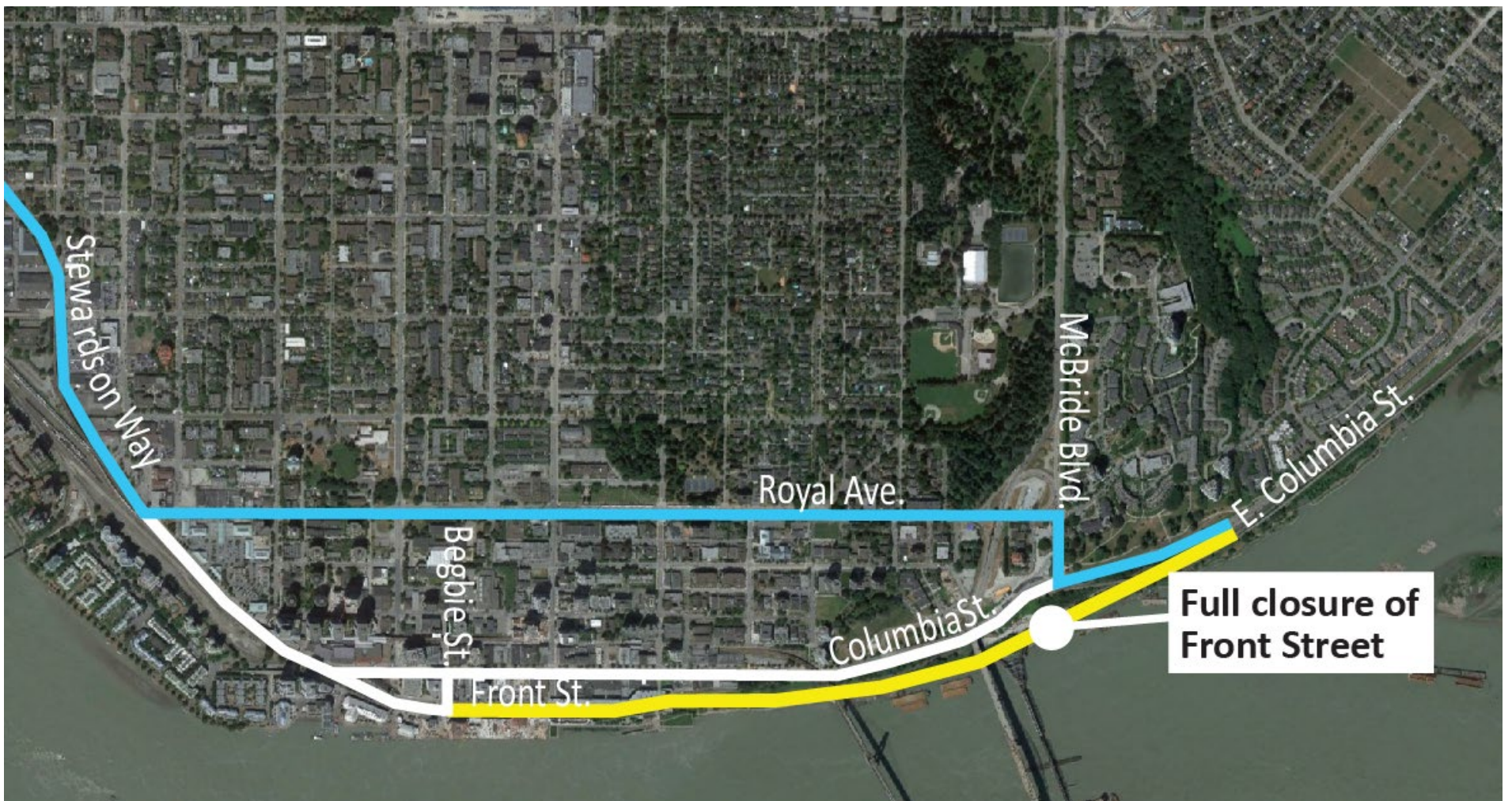


# Detour sheet

## Regular traffic detour routes during Front Street closure

Front Street is closed for crews to install steel girders and build the new bridge deck. During this closure, drivers are being detoured to Columbia Street as shown below. Commercial vehicles are being detoured to designated truck routes such as Royal Avenue and Braid Street/E 8th Ave during the day, and 10th Ave both day and night. **Access to businesses in downtown New Westminster, including on Front Street Mews, is maintained.**

All traffic pattern changes and detours will be well signed, and traffic control personnel will be on site to assist when necessary.



	Road closure
	Regular traffic detour route
	Daytime commercial vehicle detour route

Work activities are being planned so that there are not concurrent closures on key roadways in New Westminster.

Additional information regarding the Front Street closure and girder installation work is available on the Current Works and Information Sheets pages at [pattullobridgereplacement.ca](http://pattullobridgereplacement.ca).

If you have questions or need assistance, please email [info@fcgp.ca](mailto:info@fcgp.ca) or call the 24/7 phone line: 1-844-815-6149.

### Contact the Project

24/7 Phone Line  
1-844-815-6149

Project Information  
Website: [pattullobridgereplacement.ca](http://pattullobridgereplacement.ca)  
Twitter: @pattulloproject  
Email: [pattullobridgeproject@gov.bc.ca](mailto:pattullobridgeproject@gov.bc.ca)

Work on the Project  
[bcib.ca](http://bcib.ca)  
[info@bcib.ca](mailto:info@bcib.ca)