



transportation
investment
corporation



**PATTULLO BRIDGE
REPLACEMENT**



Intermittent nighttime closures of Highway 17, 112/111a Avenue, and Bridge Road

UPDATED: December 6, 2024

Continuing in December and into January, overnight directional closures of Highway 17 will be required between 9 p.m. and 5 a.m. for bridge construction activities in Surrey. Only one direction of Highway 17 will be closed at a time. This work is a continuation of bridge construction activities started in October. Crews will continue removing formwork and install duct banks underneath the deck structure. These activities are weather dependent.

When Highway 17 eastbound closures are in place, 112/111a Avenue will also be closed. When Highway 17 westbound closures are in place, Bridge Road will be closed. Exact timing of closures will be communicated in advance and posted on www.DriveBC.ca.

Access for emergency responders and cyclists will not be maintained and they will need to follow the detour routes. Drivers can expect delays and are reminded to observe signage, traffic control personnel and the construction zone speed limit.

Detour routes will be clearly marked and are as follows (shown on page two):

- **Highway 17 westbound** – drivers will be detoured at Bridgeview Drive to King George Boulevard, 120 Street, and Tannery Road to continue westbound travel.
- **Highway 17 eastbound** – drivers will be detoured at Tannery Road to 120 Street, King George Boulevard, and will access Highway 17 eastbound via Bridgeview Drive.

For more information about girder deck panel installation, please visit the Information Sheets page on pattullobridgereplacement.ca.

Contact the Project



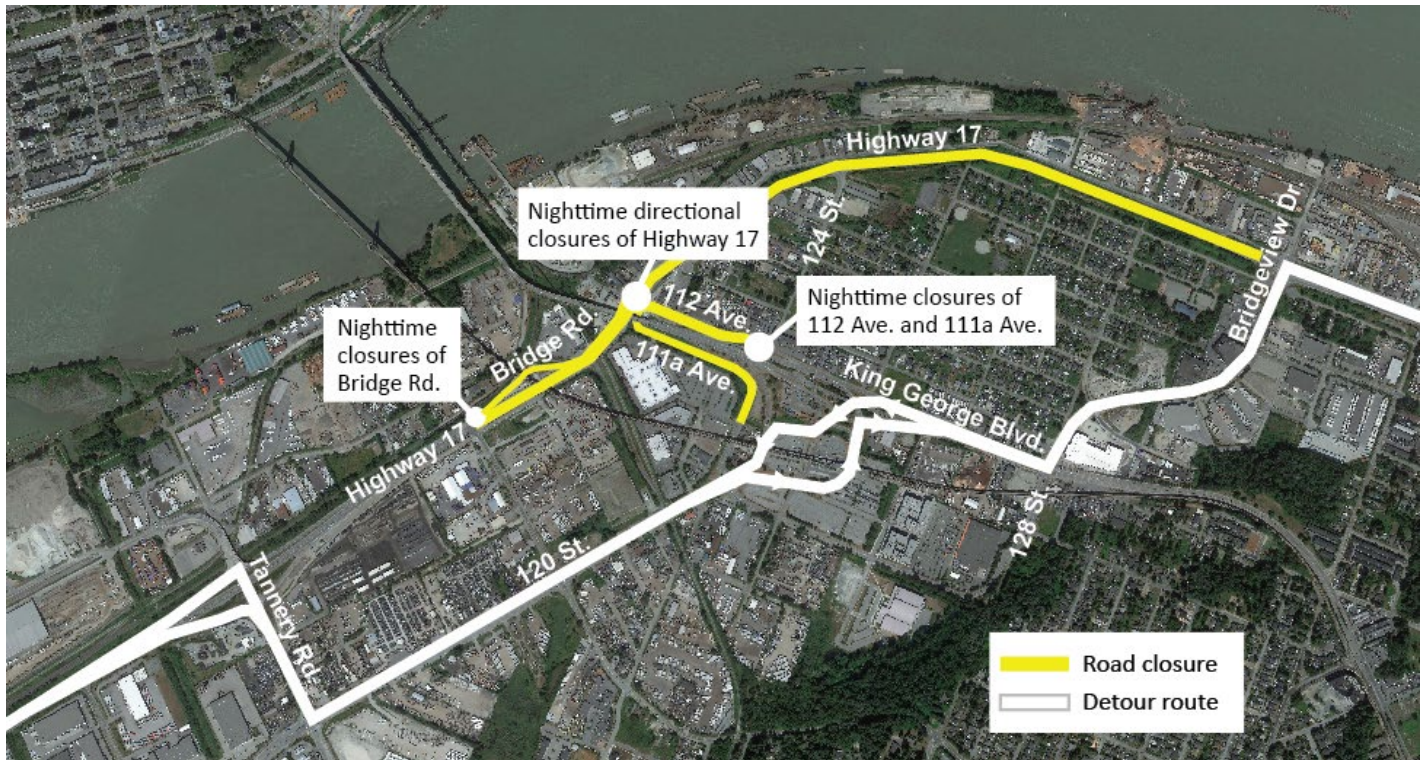
24/7 Phone Line
1-844-815-6149



Project Information
pattullobridgereplacement.ca
pattullobridgeproject@gov.bc.ca



Work on the Project
bcib.ca
info@bcib.ca



What to Expect



Timing

December 2024 / January 2025. Watch for signage indicating when closures and detours will be in place.



Hours of Work

Timing and durations of closures will be indicated on road signage and communicated in advance.



Traffic

Intermittent nighttime closures of Highway 17, Bridge Road, and 112/111a Avenue will be required. Drivers will be detoured at Tannery Road and Bridgeview Drive. Traffic control personnel will be on site to assist vehicles with turnaround, and/or following applicable detours. All traffic pattern changes and detour routes will be well signed.



Impacts/Interruptions

Drivers may experience longer than normal travel times due to the detours. Bridge deck construction is not anticipated to be noisy.

We appreciate your patience while this work is underway. If you have any questions, please email info@fcgp.ca or call the 24/7 phone line: 1-844-815-6149. For more information about the Project, please visit pattullobridgereplacement.ca.

Contact the Project



24/7 Phone Line
1-844-815-6149



Project Information
pattullobridgereplacement.ca
pattullobridgeproject@gov.bc.ca



Work on the Project
bcib.ca
info@bcib.ca