



# Intermittent nighttime closures of Highway 17, 112/111a Avenue, and Bridge Road

UPDATED: October 23, 2024

Starting in early October, Fraser Crossing Partners will continue bridge deck construction over Highway 17. This will include installing the concrete overlay on top of the deck panels to complete the bridge deck structure and create a smooth surface before asphalt paving. The bridge deck concrete overlay construction involves placing formwork, reinforcement, pouring the concrete overlay, curing, and removal of formwork.

To safely complete this work, intermittent road closures will be required. Please note, this work is weather dependent and the schedule may shift.

- In early October, a nighttime closure of Highway 17 eastbound will be implemented between 9 p.m. and 5 a.m. [Complete]
- In mid-October, a nighttime closure of Highway 17 westbound will be implemented between 9 p.m. and 5 a.m. [Complete]
- In early November, a nighttime full closure of Highway 17 in both directions will be implemented on a weekend between 9 p.m. and 7 a.m.
- In November, additional nighttime closures of Highway 17 eastbound and westbound (only one direction will be closed at a time) will be implemented between 9 p.m. and 5 a.m.

When Highway 17 eastbound closures are in place, 112/111a Avenue will also be closed. When Highway 17 westbound closures are in place, Bridge Road will be closed. When the full Highway 17 full closure is in place, both 112/111a Avenue and Bridge Road will be closed. Exact timing of closures will be communicated in advance and posted on [www.DriveBC.ca](http://www.DriveBC.ca).

Access for emergency responders and cyclists will not be maintained and they will need to follow the detour routes. Drivers can expect delays and are reminded to observe signage, traffic control personnel and the construction zone speed limit.

Detour routes will be clearly marked and are as follows (shown on page two):

- **Highway 17 westbound** – drivers will be detoured at Bridgeview Drive to King George Boulevard, 120 Street, and Tannery Road to continue westbound travel.
- **Highway 17 eastbound** – drivers will be detoured at Tannery Road to 120 Street, King George Boulevard, and will access Highway 17 eastbound via Bridgeview Drive.

For more information about girder installation and deck panels, please visit the Information Sheets page on [pattullobridgereplacement.ca](http://pattullobridgereplacement.ca).

## Contact the Project



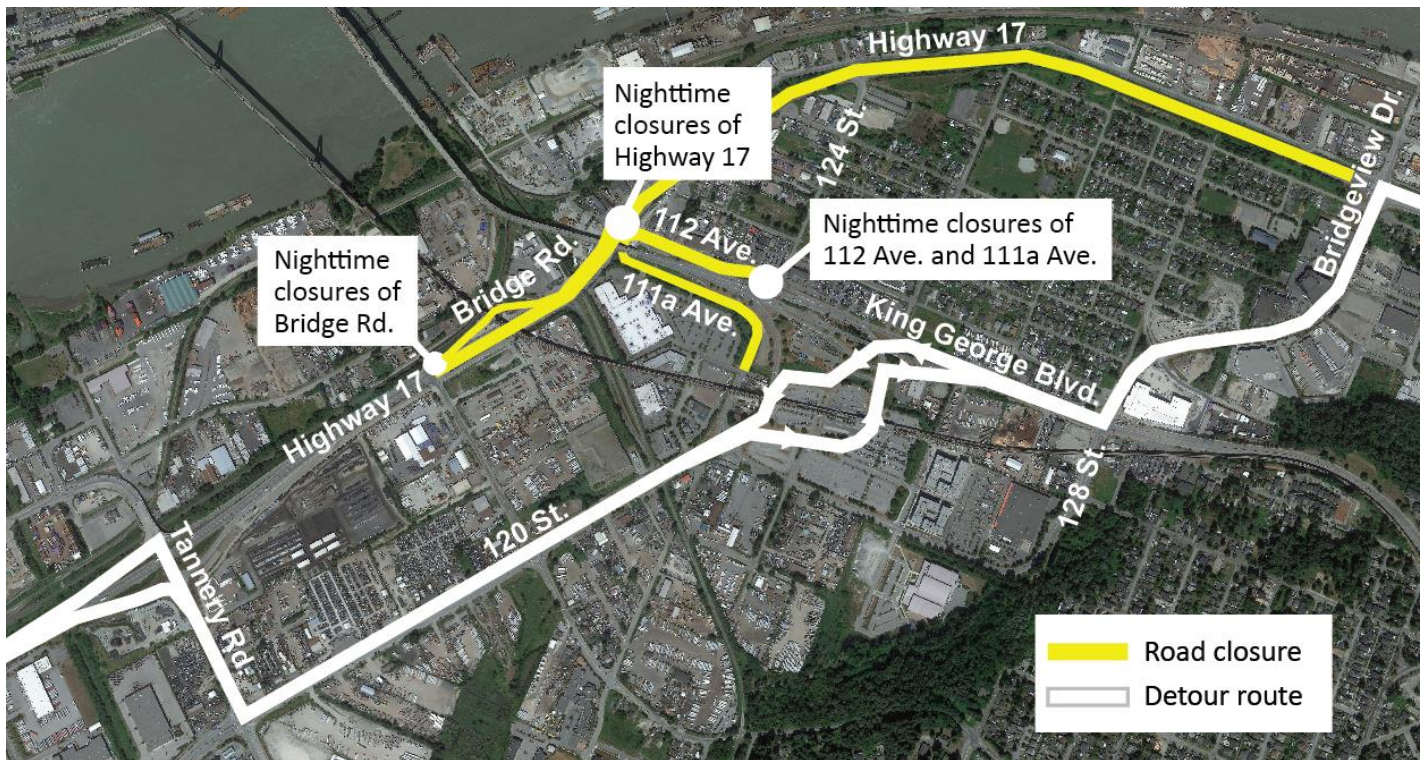
24/7 Phone Line  
1-844-815-6149



Project Information  
[pattullobridgereplacement.ca](http://pattullobridgereplacement.ca)  
[pattullobridgereplacement@gov.bc.ca](mailto:pattullobridgereplacement@gov.bc.ca)



Work on the Project  
[bcib.ca](http://bcib.ca)  
[info@bcib.ca](mailto:info@bcib.ca)



## What to Expect



### Timing

Starting early October. This work is weather dependent, so the schedule may shift. Watch for signage indicating when closures and detours will be in place.



### Hours of Work

Timing and durations of closures will be indicated on road signage and communicated in advance.



### Traffic

Intermittent nighttime closures of Highway 17, Bridge Road, and 112/111a Avenue will be required. Drivers will be detoured at Tannery Road and Bridgeview Drive. Traffic control personnel will be on site to assist vehicles with turnaround, and/or following applicable detours. All traffic pattern changes and detour routes will be well signed.



### Impacts/Interruptions

Drivers may experience longer than normal travel times due to the detours. Bridge deck construction is not anticipated to be noisy.

We appreciate your patience while this work is underway. If you have any questions, please email [info@fcgp.ca](mailto:info@fcgp.ca) or call the 24/7 phone line: 1-844-815-6149. For more information about the Project, please visit [pattullobridgereplacement.ca](http://pattullobridgereplacement.ca).

## Contact the Project



24/7 Phone Line  
1-844-815-6149



Project Information  
[pattullobridgereplacement.ca](http://pattullobridgereplacement.ca)  
[pattullobridgeproject@gov.bc.ca](mailto:pattullobridgeproject@gov.bc.ca)



Work on the Project  
[bcib.ca](http://bcib.ca)  
[info@bcib.ca](mailto:info@bcib.ca)