



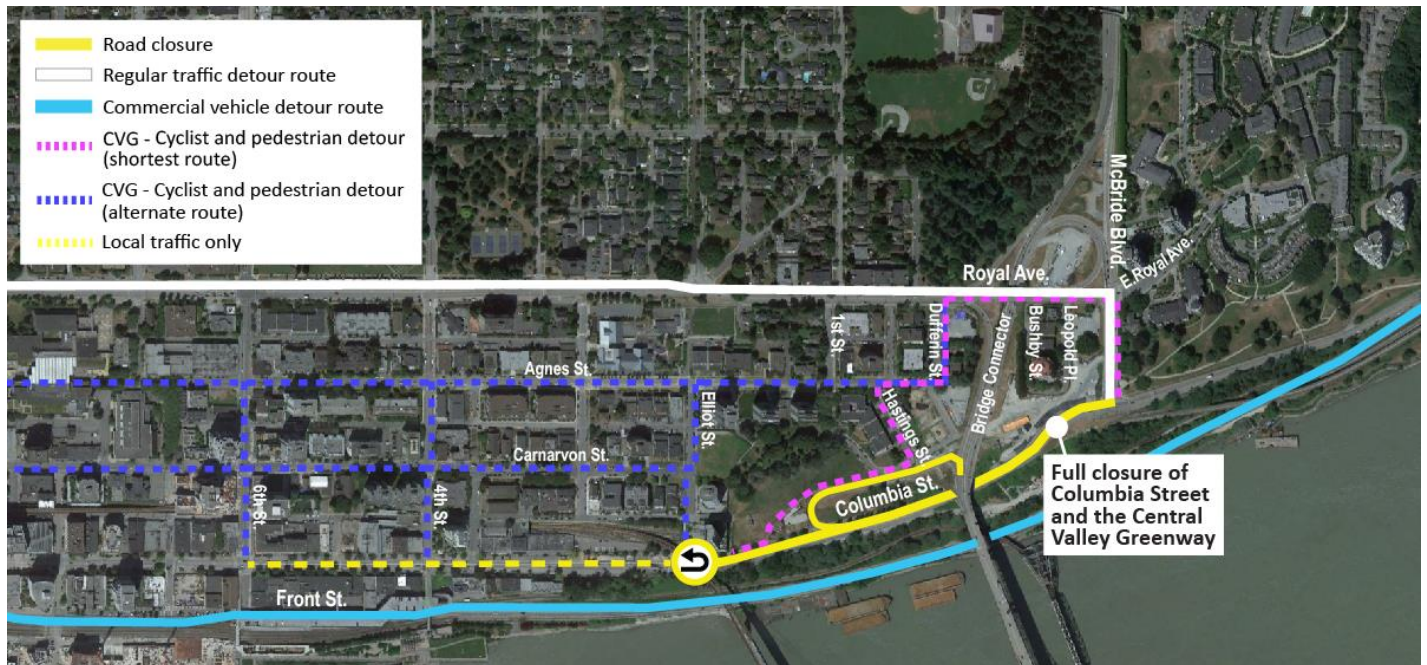
UPDATED: Full closure of Columbia Street between McBride Boulevard and Elliot Street extended

April 19, 2024

Columbia Street and the Central Valley Greenway between McBride Boulevard and Elliot Street have been closed since April 2 for crews to lift steel girders over the roadway between the bridge foundations on either side of Columbia Street. This closure will be extended until late May, as installation of the structural supports for the girders is taking longer than anticipated. We appreciate your patience while this work is underway.

While this closure is in effect, drivers, pedestrians, and cyclists will be detoured to Royal Avenue. Front Street will be open to regular traffic and trucks, and trucks will continue to use official truck routes (including observing applicable time restrictions). Traffic control personnel will be on site to assist if needed. If you have specific mobility concerns and need assistance traversing the area, please email info@fcgp.ca or call the 24/7 phone line: 1-844-815-6149.

The Columbia Street loop-ramp will be closed, but access to the Pattullo Bridge will be maintained at all times via McBride Boulevard (Bridge Connector) and the Royal Avenue on-ramp. Columbia Street between 6th Street and Elliot Street will remain open for local traffic. Access to and from all businesses on Columbia Street and Front Street Mews will be maintained at all times. Businesses are open and all traffic pattern changes and detours will be well signed.



Contact the Project



24/7 Phone Line
1-844-815-6149



Project Information
pattullobridgereplacement.ca
pattullobridgeproject@gov.bc.ca



Work on the Project
bcib.ca
info@bcib.ca



Once the girders are lifted into place, crews will bolt them together. This will require night work, and nearby residents may hear the bolting while it is underway.

After Columbia Street is reopened, a six-month full closure of Front Street will be required for crews to install girders and build the bridge deck between Columbia Street and the in-river bridge foundation. More information will be provided in advance.

What to Expect



Timing

Started on April 2 and continuing until late May.



Hours of Work

The Columbia Street closure and girder installation activities will take place 24/7. As much as possible, noisy work activities will be completed during the day.



Traffic

Drivers will be detoured to Royal Avenue or Front Street. Columbia Street between 6th Street and Elliot Street will remain open for local traffic only. Trucks will be detoured to Royal Avenue during the day and Front Street both day and night. Access to the Pattullo Bridge will be maintained via the Bridge Connector and Royal Avenue on-ramp. Drivers travelling westbound on E. Columbia Street will be detoured at Braid Street to access the Pattullo Bridge. All traffic pattern changes and detour routes will be well signed.



Impacts/Interruptions

Drivers, pedestrians and cyclists may experience longer than normal travel times due to detours and higher traffic volumes. Nearby residents may hear some noise while girders are bolted into place.

More information regarding girder installation activities in New Westminster and required road closures is available at pattullobridgereplacement.ca.

If you have any questions about this work, please email info@fcgp.ca or call the 24/7 phone line: 1-844-815-6149.

Contact the Project



24/7 Phone Line
1-844-815-6149



Project Information
pattullobridgereplacement.ca
pattullobridgeproject@gov.bc.ca



Work on the Project
bcib.ca
info@bcib.ca