



transportation  
investment  
corporation



PATTULLO BRIDGE  
REPLACEMENT



# Nighttime closures of Highway 17, 112/111a Avenue, Bridge Road, and Musqueam Drive

UPDATED: April 9, 2024

Starting the week of April 15, Fraser Crossing Partners will begin installation of bridge deck panels and associated preparation work across Highway 17 just east of the existing Pattullo Bridge. These deck panels will be placed on top of the girders to form the bridge deck and road closures are being implemented at night to minimize disruption to traffic:

- Starting the week of April 15, intermittent nighttime closures on 112/111a Avenue will be in place between 7 p.m. and 5 a.m.
- Shortly after, intermittent directional closures of Highway 17 between 9 p.m. and 5 a.m. will be required, in addition to closures on 112/111a Avenue, Bridge Road, and Musqueam Drive between 7 p.m. and 5 a.m. Occasional full closures of Highway 17 in both directions will also be required. These closures will continue intermittently for approximately two months.

Please check [www.DriveBC.ca](http://www.DriveBC.ca) for updates. Access for emergency responders and cyclists will not be maintained and will need to follow the detour routes. Drivers can expect delays and are reminded to observe signage, traffic control personnel, and the construction zone speed limit.

Detour routes will be clearly marked and are as follows (shown on page two):

- **Highway 17 westbound** – drivers will be detoured at Bridgeview Drive to King George Boulevard, 120 Street, and Tannery Road to continue westbound travel.
- **Highway 17 eastbound** – drivers will be detoured at Tannery Road to 120 Street, King George Boulevard, and will access Highway 17 eastbound via Bridgeview Drive.

During deck panel lifts over the westbound lanes (between Bridge Road and the foundation in the Highway 17 centre median), nighttime closures of Highway 17 westbound, Bridge Road, and Musqueam Drive will be required.

During deck panel lifts over the eastbound lanes, nighttime closures of Highway 17 eastbound, 112 Avenue, and 111a Avenue will be required.

For more information about how the deck panels are built and installed, please visit [pattullobridgereplacement.ca](http://pattullobridgereplacement.ca).

## Contact the Project



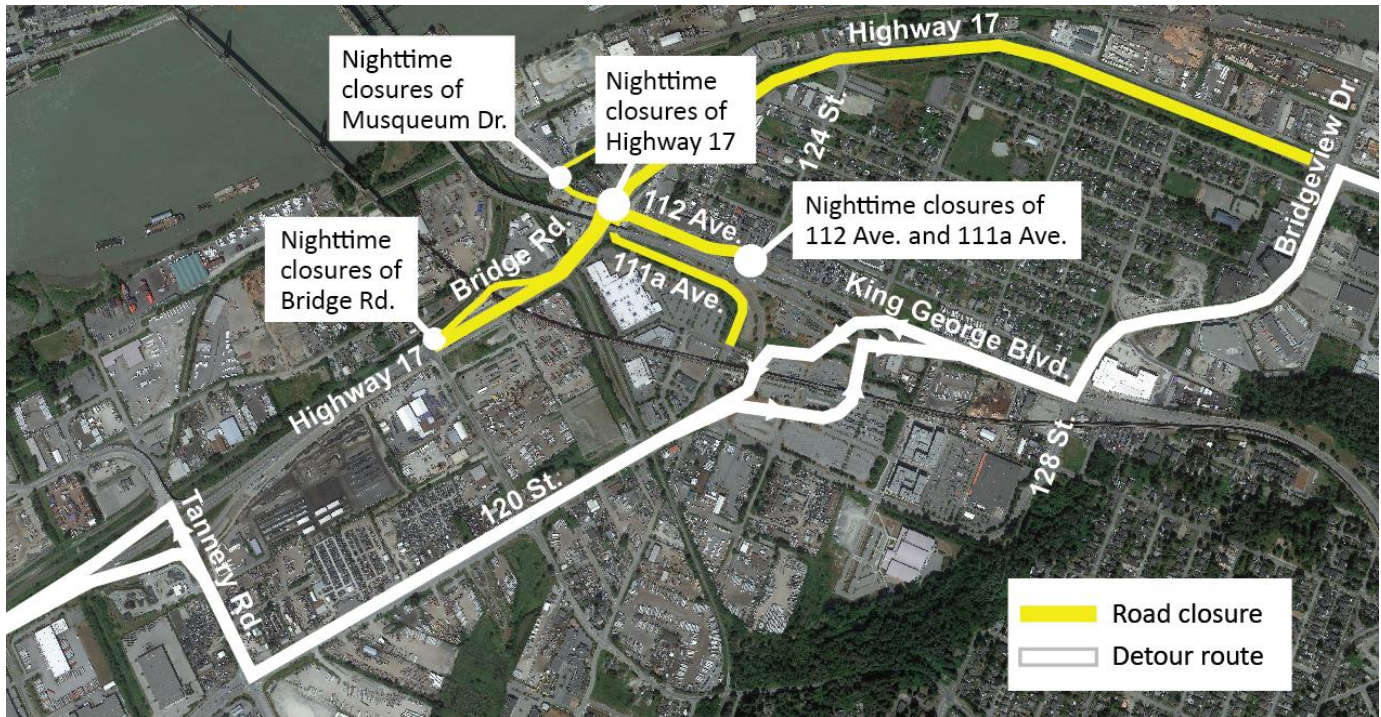
24/7 Phone Line  
1-844-815-6149



Project Information  
[pattullobridgereplacement.ca](http://pattullobridgereplacement.ca)  
[pattullobridgeproject@gov.bc.ca](mailto:pattullobridgeproject@gov.bc.ca)



Work on the Project  
[bcib.ca](http://bcib.ca)  
[info@bcib.ca](mailto:info@bcib.ca)



## What to Expect



### Timing

Starting the week of April 15 and continuing for approximately two months. Nighttime closures will not be required every night. Watch for signage indicating when closures and detours will be in place.



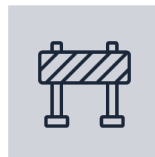
### Hours of Work

When required, closures on Highway 17 will be implemented between 9 p.m. and 5 a.m. Closures on 112/111a Avenue, Bridge Road, and Musqueam Drive will be implemented between 7 p.m. and 5 a.m.



### Traffic

Highway 17 drivers will be detoured at Tannery Road and Bridgeview Drive. Traffic control personnel will be on site to assist vehicles with turnaround, and/or following applicable detours. All traffic pattern changes and detour routes will be well signed.



### Impacts/Interruptions

Nighttime closures of Highway 17 between Bridgeview Drive and Tannery Road. Drivers may experience longer than normal travel times due to the detours. The installation of deck panels is not anticipated to be noisy.

We appreciate your patience while this work is underway. If you have any questions, please email [info@fcgp.ca](mailto:info@fcgp.ca) or call the 24/7 phone line: 1-844-815-6149. For more information about the Project, please visit [pattullobridgereplacement.ca](http://pattullobridgereplacement.ca).

## Contact the Project



**24/7 Phone Line**  
1-844-815-6149



**Project Information**  
[pattullobridgereplacement.ca](http://pattullobridgereplacement.ca)  
[pattullobridgeproject@gov.bc.ca](mailto:pattullobridgeproject@gov.bc.ca)



**Work on the Project**  
[bcib.ca](http://bcib.ca)  
[info@bcib.ca](mailto:info@bcib.ca)