

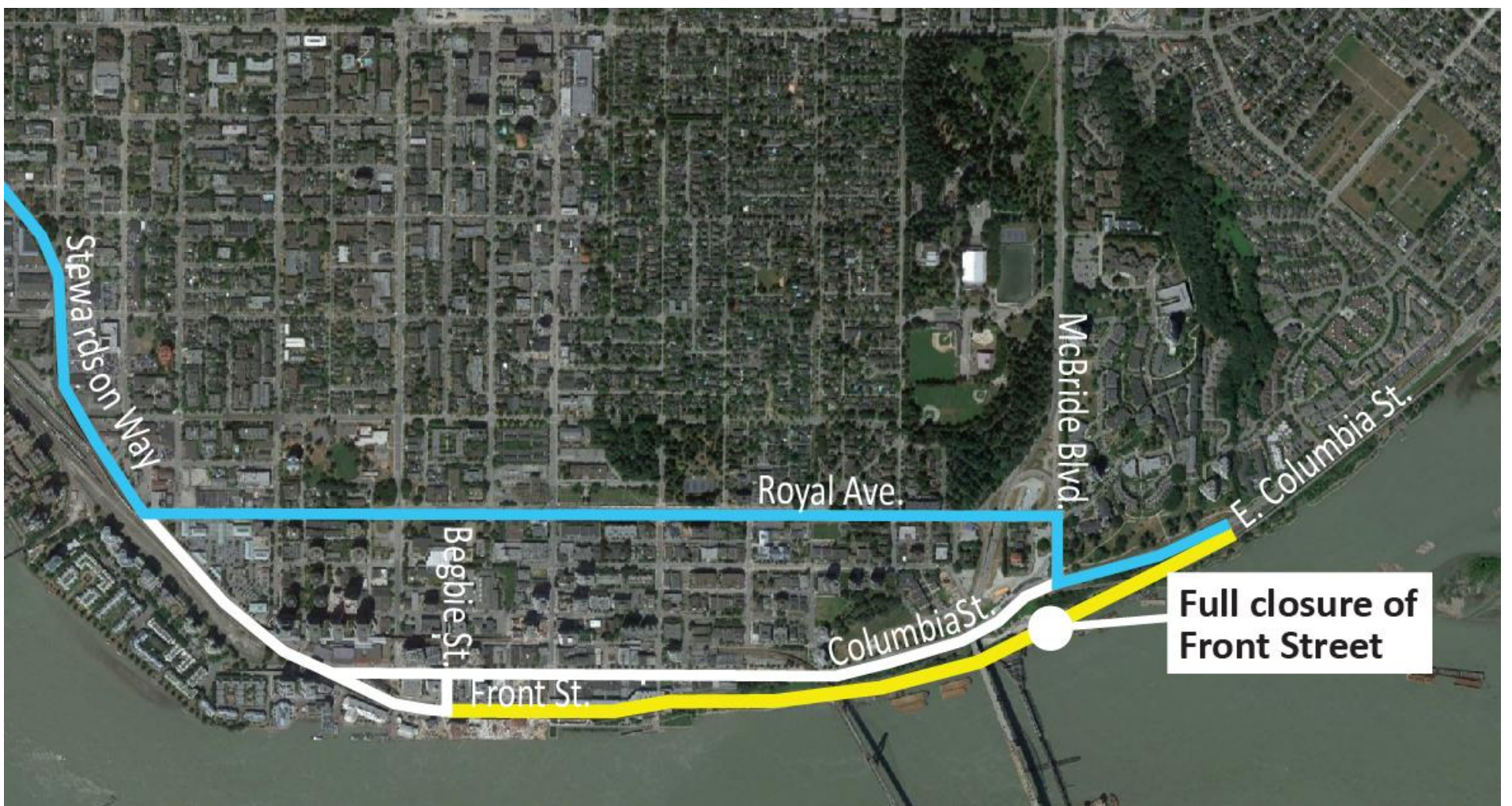
Detour sheet

Regular traffic detour routes during Front Street closures

Starting in February 2024, the project will implement sequential full road closures on Front Street and Columbia Street near the Pattullo Bridge for crews to install steel girders and build the new bridge deck. Front and Columbia will not be closed at the same time.

The first Front Street closure will take place starting on Wednesday, February 21 for approximately one month for crews to offload steel girders, build temporary support structures, and begin installing girders between Front Street and Columbia Street. An additional six-month closure of Front Street will be required starting in spring 2024 to complete the girder installation and bridge deck construction over Front Street.

While these full closures are in effect, drivers will be detoured to Columbia Street as shown below. Commercial vehicles will be detoured to designated truck routes such as Royal Avenue and Braid Street/E 8th Ave during the day, and 10th Ave both day and night. Front Street Mews will remain open at all times. All traffic pattern changes and detours will be well signed, and traffic control personnel will be on site to assist when necessary.



	Road closure
	Regular traffic detour route
	Daytime commercial vehicle detour route

Work activities are being planned so that there are not concurrent closures on key roadways in New Westminster.

Additional information regarding the Front Street closures and girder installation work is available on the Current Works and Information Sheets pages at pattullobridgereplacement.ca.

If you have questions or need assistance, please email info@fcgp.ca or call the 24/7 phone line: 1-844-815-6149.

Contact the Project

24/7 Phone Line
1-844-815-6149

Project Information
Website: pattullobridgereplacement.ca
Twitter: @pattulloproject
Email: pattullobridgeproject@gov.bc.ca

Work on the Project
bcib.ca
info@bcib.ca