

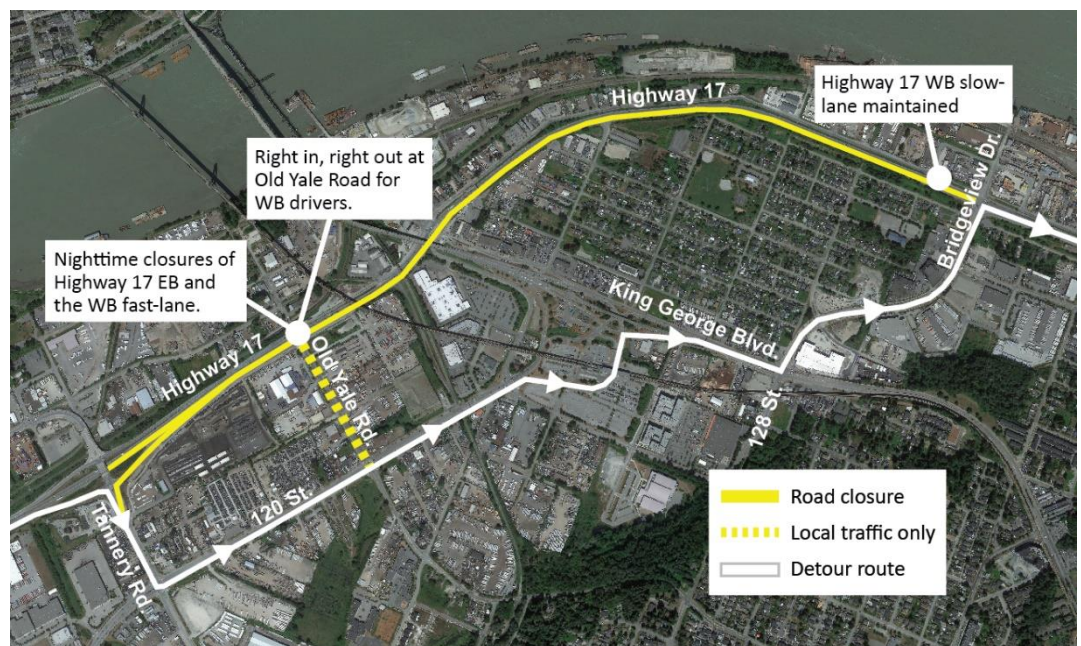
# Nighttime closures of Highway 17 eastbound and Old Yale Road for new overpass construction

January 25, 2024

As part of the Pattullo Bridge Replacement Project, Highway 17 will be grade-separated over Old Yale Road, improving traffic flow on Highway 17. Starting Monday, February 5, crews will begin lifting steel girders across the eastbound lanes of Highway 17 at the Old Yale Road intersection to build the new overpass.

Nighttime closures of Highway 17 eastbound will be required between 9 p.m. and 5 a.m. for approximately one week. Closures are being implemented at night to minimize disruption to traffic.

Drivers travelling eastbound on Highway 17 will be detoured at Tannery Road to travel on 120 Street, King George Boulevard, and Bridgeview Drive to continue on Highway 17.



Nighttime closures of the Highway 17 westbound fast lane will also be required between 7 p.m. and 5 a.m. Old Yale Road will remain open to local traffic only between Highway 17 and 120 Street. Road signage will be in place and detour routes will be clearly marked (as shown above).

As the girders are lifted into place, crews will bolt them into place to ensure they are safely secured over the roadway. Nearby businesses and residents may hear intermittent noise while bolting is underway.

Drivers can expect delays and are reminded to observe signage, traffic control personnel and the construction zone speed limit. Please check [www.DriveBC.ca](http://www.DriveBC.ca) for updates. All cyclists and emergency responders will need to follow detour routes while these closures are in effect.

## Contact the Project



24/7 Phone Line  
1-844-815-6149



Project Information  
[pattullobridgereplacement.ca](http://pattullobridgereplacement.ca)  
[pattullobridgeproject@gov.bc.ca](mailto:pattullobridgeproject@gov.bc.ca)



Work on the Project  
[bcib.ca](http://bcib.ca)  
[info@bcib.ca](mailto:info@bcib.ca)



## What to Expect



### Timing

Starting Monday, February 5 and continuing for approximately one week.



### Hours of Work

Highway 17 eastbound closures will be implemented between 9:00 p.m. and 5:00 a.m.

Old Yale Road and Highway 17 westbound fast lane closures will be implemented between 7:00 p.m. and 5:00 a.m.



### Traffic

Highway 17 eastbound drivers will be detoured at Tannery Road to travel on 120 Street, King George Boulevard, and Bridgeview Drive to continue on Highway 17. Old Yale Road will remain open to local traffic only between Highway 17 and 120 Street. Traffic control personnel will be on site to direct traffic when stoppages are required. All traffic pattern changes and detour routes will be well signed.



### Impacts/Interruptions

Drivers may experience longer than normal travel times due to the detours. Nearby residents and businesses may hear some noise associated with bolting the girders into place. We appreciate your patience while this work is underway.

If you have any questions about this work, please email [info@fcgp.ca](mailto:info@fcgp.ca) or call the 24/7 phone line: 1-844-815-6149.

For more information about the Project, please visit [pattullobridgereplacement.ca](http://pattullobridgereplacement.ca).

## Contact the Project



**24/7 Phone Line**  
1-844-815-6149



**Project Information**  
[pattullobridgereplacement.ca](http://pattullobridgereplacement.ca)  
[pattullobridgeproject@gov.bc.ca](mailto:pattullobridgeproject@gov.bc.ca)



**Work on the Project**  
[bcib.ca](http://bcib.ca)  
[info@bcib.ca](mailto:info@bcib.ca)