

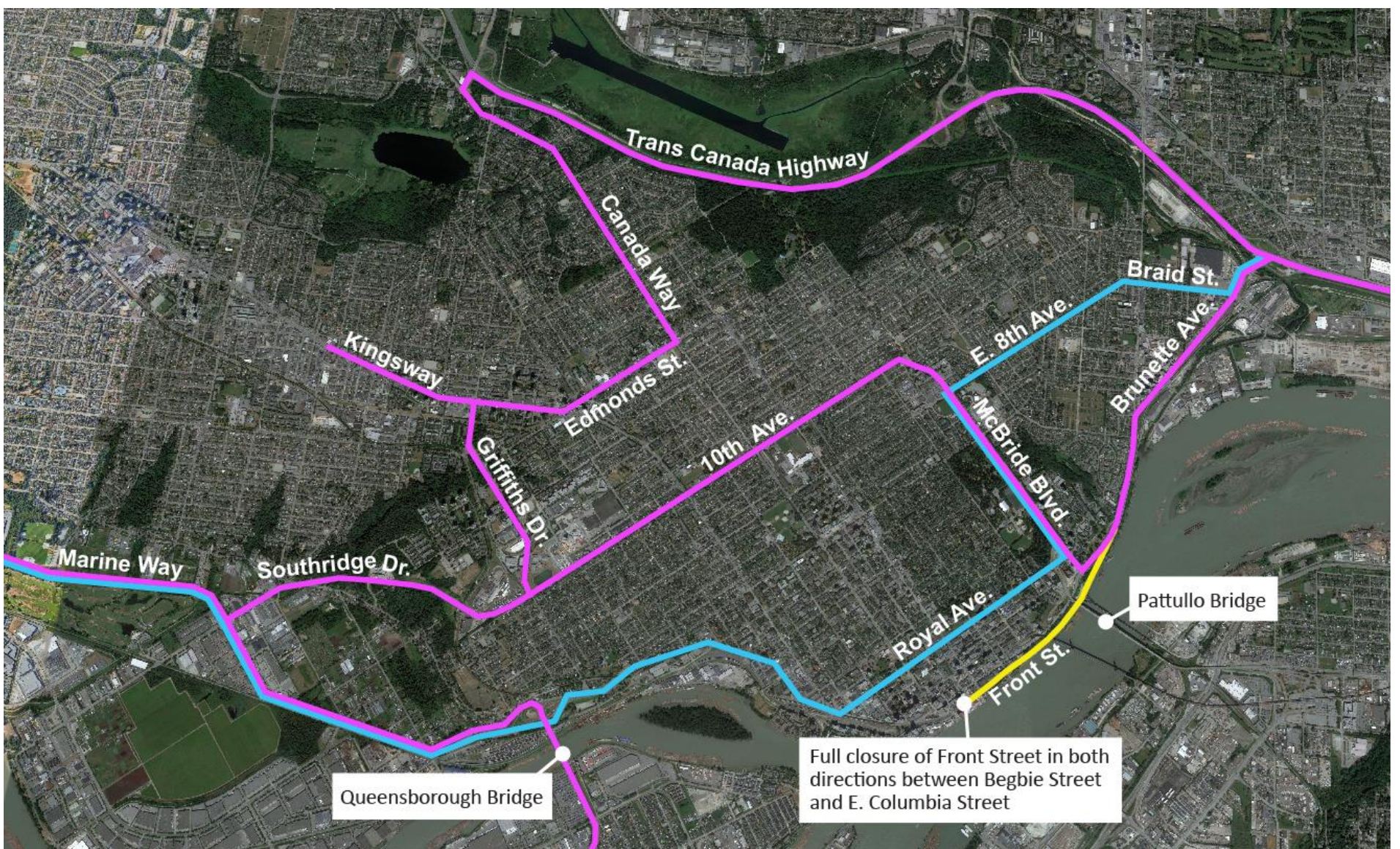
Detour sheet




Commercial vehicle detour routes during Front Street closures

Starting in February 2024, the project will implement sequential full road closures on Front Street and Columbia Street near the Pattullo Bridge for crews to install steel girders and build the new bridge deck. Front and Columbia will not be closed at the same time.

The first Front Street closure will take place starting the week of February 5 for approximately one month for crews to offload steel girders, build temporary support structures, and begin installing girders between Front Street and Columbia Street. An additional six-month closure of Front Street will be required in spring 2024 to complete the girder installation and bridge deck construction over Front Street.

While these full closures are in effect, commercial vehicles will be detoured to the 24/7 alternate routes as shown below. Royal Avenue or Braid Street/ E 8th Ave can be used during the day.




-  Road closure
-  24/7 commercial vehicle detour routes
-  Daytime commercial vehicle detour route

Work activities are being planned so that there are not concurrent closures on key roadways in New Westminster.

Additional information regarding the Front Street closures and girder installation work is available on the Current Works and Information Sheets pages at pattullobridgereplacement.ca.

If you have questions or need assistance, please email info@fcgp.ca or call the 24/7 phone line: 1-844-815-6149.

Contact the Project

 24/7 Phone Line
1-844-815-6149



Project Information
Website: pattullobridgereplacement.ca
Twitter: @pattulloproject
Email: pattullobridgeproject@gov.bc.ca



Work on the Project
bcib.ca
info@bcib.ca