



# Long weekend closure of Royal Avenue and Pattullo Bridge northbound lanes

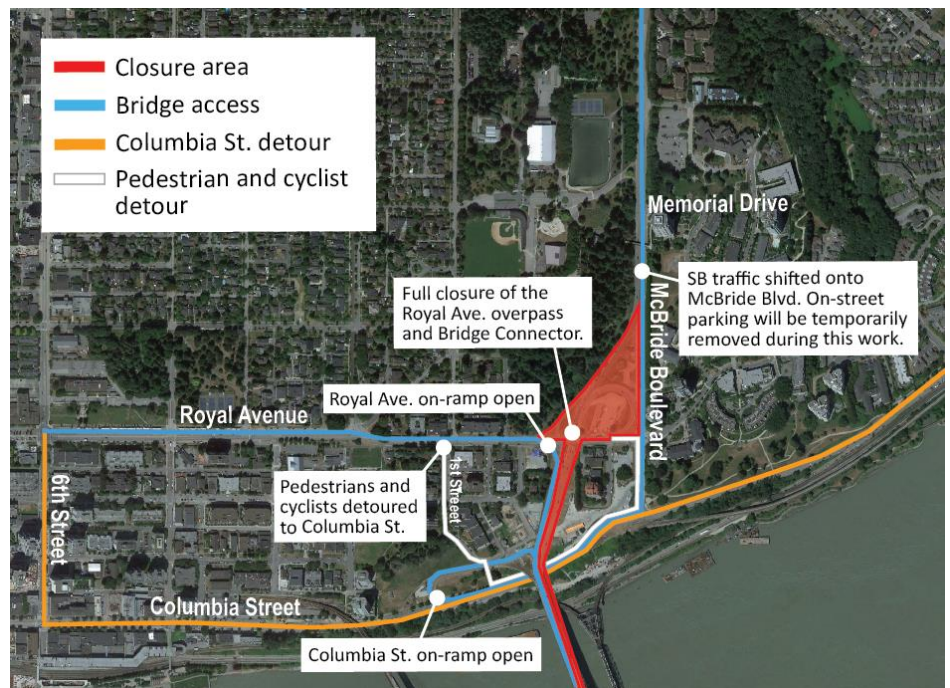
May 5, 2023

Starting on Friday, May 19, to the morning of Tuesday, May 23, Fraser Crossing Partners will require road closures in New Westminster to replace the Royal Avenue overpass bridge deck. This work was originally scheduled to take place between April 28 and May 1 but was rescheduled due to an equipment issue.

<b>Friday, May 19</b> 7 a.m. to 7 p.m.	- The Royal Avenue off-ramp from the Bridge Connector northbound will be reduced to one lane
<b>Friday, May 19</b> 7 p.m. to <b>Tuesday, May 23</b> 5 a.m.	- Full weekend closure on Royal Avenue in both directions between McBride Boulevard and the Royal Avenue on-ramp - Full closure of the Bridge Connector - Full closure of the Pattullo Bridge northbound lanes

The following detour routes will be provided during the weekend closures:

- **Royal Avenue Eastbound:** The Royal Avenue on-ramp to the Pattullo Bridge will remain open. Eastbound through traffic will be detoured to Columbia Street via 6<sup>th</sup> Street.
- **Bridge Connector Southbound:** During the Bridge Connector closure, southbound traffic will be detoured to Columbia Street via McBride Boulevard. The on-street parking on McBride Boulevard (north or Royal Avenue) will be temporarily removed to accommodate two-way traffic. The Columbia Street on-ramp to the Pattullo Bridge will remain open.



## Contact the Project



24/7 Phone Line  
1-844-815-6149



Project Information  
[pattullobridgereplacement.ca](http://pattullobridgereplacement.ca)  
[pattullobridgeproject@gov.bc.ca](mailto:pattullobridgeproject@gov.bc.ca)



Work on the Project  
[bcib.ca](mailto:bcib.ca)  
[info@bcib.ca](mailto:info@bcib.ca)



- **McBride Boulevard Northbound:** Left turns from McBride onto Royal Avenue will only be permitted for local traffic accessing Leopold Place. There will be no access onto Royal from Bushby Street.
- **Pedestrians and cyclists:** The temporary pedestrian bridge on Royal Avenue will be closed due to safety precautions. Pedestrians and cyclists will be detoured to the Central Valley Greenway via 1<sup>st</sup> Street and McBride Boulevard.

Northbound Pattullo Bridge users are encouraged to take the Port Mann or Alex Fraser during the closure. Northbound N19 NightBus trips will be rerouted over the Queensborough and Alex Fraser bridges, and affected customers should plan for an additional 30 minutes of travel time.

Local bus routes that use Royal Avenue may also be impacted during the weekend closure. Please check the [TransLink Trip Planner](#) for more information and updated schedules.

## What to Expect



### Timing

May 19, 2023 to May 23, 2023



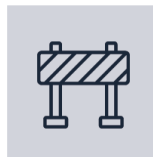
### Hours of Work

Friday, May 19 from 7 a.m. to Tuesday, May 23 at 5 a.m.



### Traffic

Weekend closure of Royal between McBride and the Royal Avenue on-ramp, as well as the northbound lanes on the Pattullo Bridge. Traffic control personnel will be on site to direct traffic, pedestrians, and cyclists. All traffic pattern changes will be well-signed.



### Impacts/Interruptions

Drivers and Pattullo Bridge users will need to plan for additional travel time. Work will be underway 24 hours a day during this operation. Nearby residents may hear noise from back-up beepers and heavy equipment during hours of work. Every effort will be made to minimize disruption when possible. We appreciate your patience while this work is underway.

For more information about the Pattullo Bridge Replacement Project, please visit [pattullobridgereplacement.ca](http://pattullobridgereplacement.ca).

If you have any questions about this work, please email [info@fcgp.ca](mailto:info@fcgp.ca) or call the 24/7 construction information phone line: 1-844-815-6149.

## Contact the Project



**24/7 Phone Line**  
1-844-815-6149



**Project Information**  
[pattullobridgereplacement.ca](http://pattullobridgereplacement.ca)  
[pattullobridgeproject@gov.bc.ca](mailto:pattullobridgeproject@gov.bc.ca)



**Work on the Project**  
[bcib.ca](http://bcib.ca)  
[info@bcib.ca](mailto:info@bcib.ca)