

MCTS Western NAVWARN Issuing Desk

Website: nis.ccg-gcc.gc.ca

Phone: 250-627-3070

Email: NAVWARN.MCTSPrinceRupert@innav.gc.ca

Navigational Warning Request

Organization Name and Contact Number: Fraser River Pile and Dredge (GP) Inc.

Site Name and Contact Number:

FRPD – Jamie Longmuir – Senior Superintendent – jlongmuir@frpd.com – 604-841-5880

FRPD – Ken Schulz – Superintendent – kschulz@frpd.com – 604-209-1104

FRPD – Justin Pilgrim – Project Manager – jpilgrim@frpd.com – 604-818-8946

FRPD – Ryan Pilgrim – Dredging Superintendent – rpilgrim@frpd.com – 604-374-6321

FRPD – Mike Logan – Senior Project Manager – mlogan@frpd.com – 604-617-1541

FRPD – Jordan Carriere – Health and Safety Manager – jcarriere@frpd.com – 779-887-3740

FRPD – Stephen Arogundade – Project Manager – sarogundade@frpd.com – 778-554-2660

Start Date and Time: November 23, 2022 – 24:00

End Date and Time: November 30, 2022 – 24:00 (Weekly issuance) *Or amended due to change in work activities*

Location of Activity:

Fraser River upstream of the New Westminster Rail Bridge approximate Latitude 49 12' 34", Longitude 122 53' 48". North Bank and N1.

Brief Description of Work:

Pier N1 Pile Proof Work – D.Reid and Arctic Tuk

Scour Placement – N1 Pier

Hours of Operation:

Monday to Saturday – 10 to 24 Hours per Shift

Vessels on Site:

D. Reid Marine Derrick (Pile Install)

McKenzie Marine Derrick (Scour)

Arctic Tuk (Proof only)

Various material barges required to undertake the scope of works, including but not limited to:

- FRPD #17, FRPD Rupert, MBD 32 Scow, FRPD 21, Ocean Hauler – Pile Works
- FRPD #7, FRPD #6, PT 106, FRPD #12, Deepwater 319 – Scour Protection

VHF Channel Monitored:

VHF channels to be monitored include:

- Channel 16 for the Canadian Coast Guard – **Emergency**
- Channel 74 for marine traffic in the Fraser River.
- Channel 69 – FRPD Crew(s) Working Channel
- Channel 71 – Alternate FRPD Crew Working Channel

Special Requests or Additional Information:

Reference is made to the attached staging drawing for anticipated works from Nov 23 to Nov 30, 2022.

No restriction to the main downstream or upstream navigational channels.

NAV tug assist will be available during in-river work (period of this NAVWARN).

Temporary Special Operating Procedures to be followed by Marine Traffic and Mariners.

Temporary Special Operating Procedures (TSOP's)	Notice (minutes)	Communications	Communication Sequencing and VHF Channels
Pre-Call	60	Master Call Bridge Tender	Refer to Communications Flow Chart <ul style="list-style-type: none">• VHF Channel 74 General Information• VHF Working Channel 69 (Marine Contractor Marine Flagger)• VHF Channel 16 Emergency Channel
ETA Call	20	Master Call Bridge Tender	Refer to Communications Flow Chart <ul style="list-style-type: none">• VHF Channel 74 General Information• VHF Working Channel 69 (Marine Contractor Marine Flagger)• VHF Channel 16 Emergency Channel

The sequencing of actions and the VHF communication responsibilities are outlined in the Corresponding Temporary Special Operating Procedures

Reference made to the email sent to the NAVWARN group on 19 August 2021 regarding Catherwood Tug assist.



transportation
investment
corporation



**PATTULLO BRIDGE
REPLACEMENT**

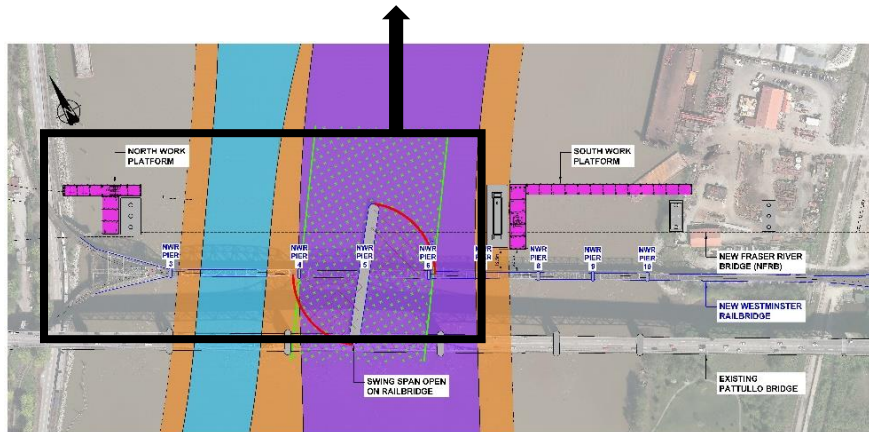
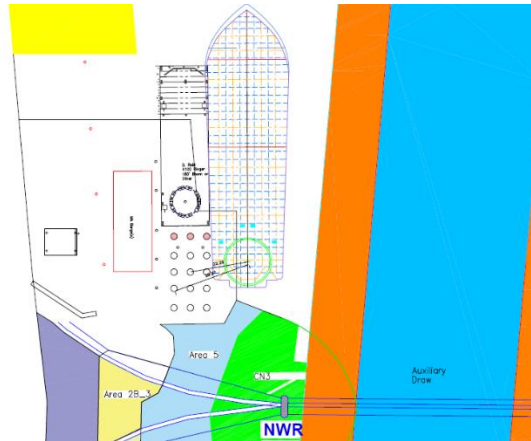


NAVWARN – November 23-30, 2022

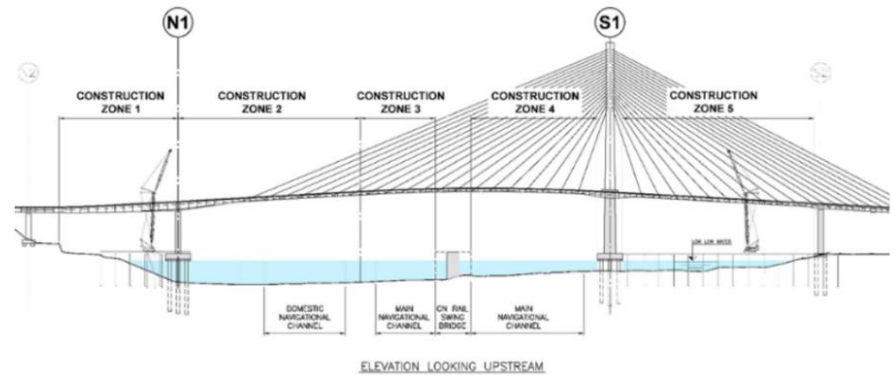
CONSTRUCTION ACTIVITIES PLANNED:

Nov 23 to Nov 30, 2022

Pattullo Bridge
Proof N1 Piles
Arctic Tuk Support - Nov 23 and 24
N1 Scour - Geobag and Rip Rap



NAVIGATIONAL RESTRICTIONS:



Marine Construction Weekly Update					
Period of November 23-30, 2022	Zone 1 Pier N1 to New Westminster Shoreline	Zone 2 Navigational Channel	Zone 3 Main Navigational Channel Upstream	Zone 4 Main Navigational Channel Downstream	Zone 5 Pier S1 to Surrey Shoreline

Open to All Marine Traffic
 Open with restricted manageability due to construction activities
 Closed due to construction activity

Contact the Project

24/7 Phone Line
 1-844-815-6149

Project Information
pattullobridgereplacement.ca
pattullobridgeproject@gov.bc.ca

Marine Channels
 74 General Info
 16 Marine Emergency

06 Marine Contractor
 69 Tugs and Crews