

Temporary nighttime closure of the southbound Bridge Connector

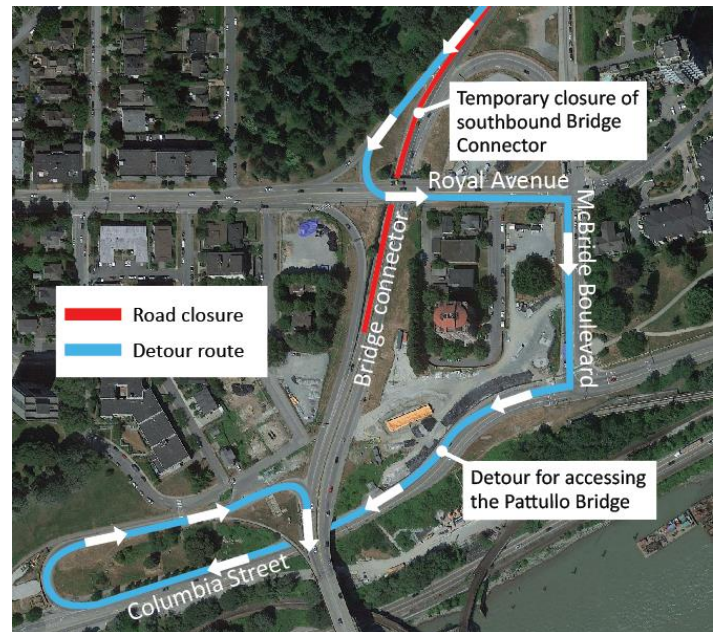
November 15, 2022

Please be advised that on Tuesday, November 15 and Wednesday, November 16, the southbound Bridge Connector will be closed temporarily between 10 p.m. and 5 a.m. so that Fraser Crossing Partners (FCP) can conduct road maintenance work.

While the southbound Bridge Connector is closed, drivers will be directed to use the Columbia Street loop-ramp via McBride Boulevard as shown in the graphic. Detour signage will be in place.

Once the southbound road work is complete, crews will then shift the work area to northbound Bridge Connector which will require single lane closures; however, northbound traffic will be maintained at all times.

A small amount of hydrovaccing will be required and will be undertaken as soon as the closure is implemented to minimize local noise impacts.



What to Expect



Timing

Tuesday, November 15 to Wednesday, November 16

Wednesday, November 16 to Thursday, November 17



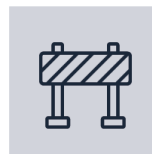
Hours of Work

Between 10 p.m. and 5 a.m.



Traffic

Traffic will be directed to the Columbia Street loop-ramp for accessing the Pattullo Bridge while the southbound Bridge Connector is closed. When required, traffic control personnel will be on site to direct traffic, pedestrians, and cyclists. All traffic pattern changes will be well-signed.



Impacts/Interruptions

Nearby residents may hear some noise from the hydrovaccing and road maintenance activities. Drivers may experience temporary delays resulting from the detour. We appreciate your patience while this work is underway.

If you have any questions about this work, please email info@fcgp.ca or call the 24/7 construction information phone line: 1-844-815-6149.

Contact the Project



24/7 Phone Line
1-844-815-6149



Project Information
pattullobridgereplacement.ca
pattullobridgeproject@gov.bc.ca



Work on the Project
bcib.ca
info@bcib.ca