



UPDATED: Extended Bridge Road temporary closure in Surrey

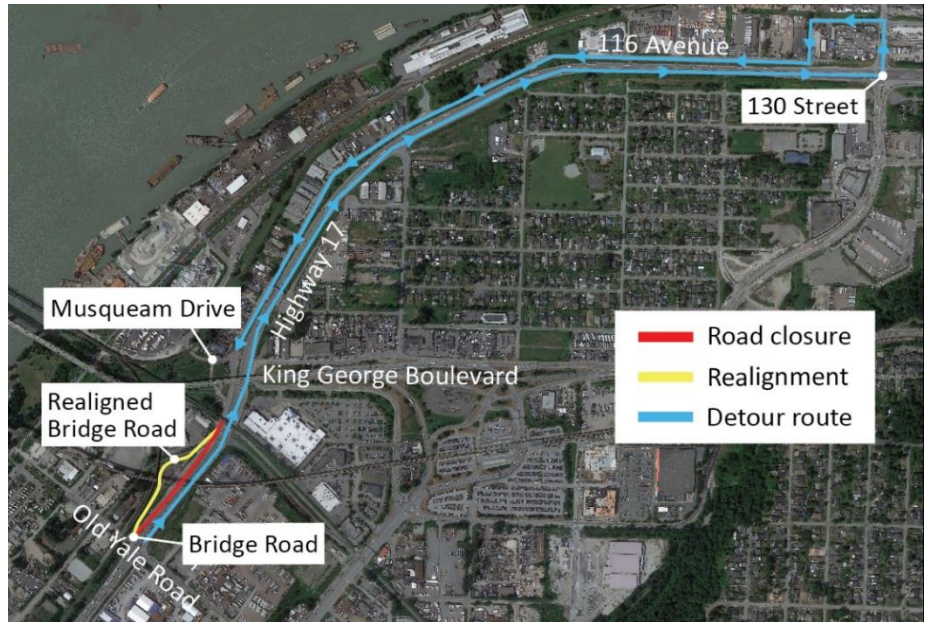
October 14, 2022

A full closure of Bridge Road between Old Yale Road and the cul-de-sac just east of the railway crossing, implemented on October 12, has been extended until October 29 so crews can complete utility relocation and roadwork activities in the area.

This closure will remain in effect 24/7 and traffic will be detoured via 130 Street to access Bridge Road, 116 Avenue, Industrial Road, and Musqueam Drive.

When the work is complete, Bridge Road will be re-opened to eastbound traffic with a slight change in alignment, as shown in the graphic.

All traffic pattern changes will be well-signed, and traffic control personnel will be on site to assist drivers when required.



What to Expect



Timing

October 12, 2022 until October 29, 2022



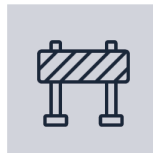
Hours of Work

Closure will be in effect 24/7.



Traffic

Drivers will be detoured to 130 Street while the Bridge Road closure is in effect. When required, traffic control personnel will be on site to direct traffic. All traffic patterns will be well-signed.



Impacts/Interruptions

Nearby business owners may hear noise from the utility relocation and roadwork activities. Drivers may experience temporary delays resulting from the detour. We appreciate your patience while this work is underway.

If you have questions about this closure, please email info@fcgp.ca or call the 24/7 phone line: 1-844-815-6149.

For more information about the Project, please visit pattullobridgereplacement.ca.

Contact the Project



24/7 Phone Line
1-844-815-6149



Project Information

Website: pattullobridgereplacement.ca
Twitter: [@pattulloproject](https://twitter.com/pattulloproject)
Email: pattullobridgeproject@gov.bc.ca



Work on the Project

bcib.ca
info@bcib.ca