



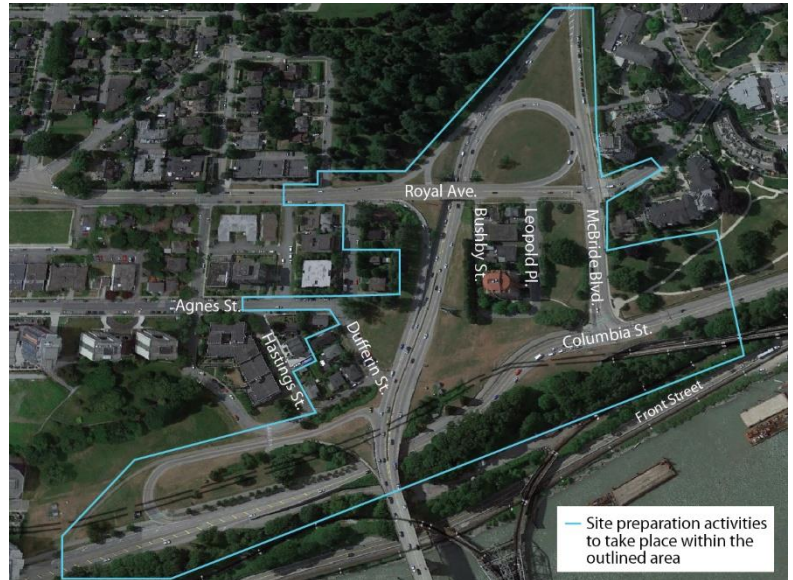
Project work in New Westminster

February 23, 2022

Fraser Crossing Partners is continuing site preparation work in New Westminster, which includes investigative ground work and utility relocations within the Project area.

Fenced work areas have already been set up in several locations and additional fencing can be expected. These areas will be used for storing materials and parking for site trailers, construction vehicles and crews.

Some tree removal will take place south of Columbia Street. Trees removed as part of the Project will be replaced at a minimum ratio of 2:1. The Project team will work closely with municipalities and First Nations on the replacement of trees and the enhancement of sites within the Project area over the duration of the Project.



While site preparation work is underway, temporary lane closures and impacts to sidewalks and multi-use paths can be expected. Signage will be in place and traffic control personnel will be on site to assist when required.

Bridge foundation construction in New Westminster is ongoing. For more information, please [click here](#).

What to Expect



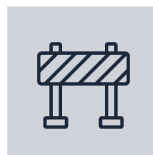
Timing
Throughout 2022



Hours of Work
Monday to Friday from 7:00 a.m. – 8:00 p.m.
Saturdays from 9:00 a.m. – 6:00 p.m.



Traffic
When required, traffic control personnel will be on site to direct traffic, pedestrians, and cyclists. All traffic pattern changes will be well signed.



Impacts/Interruptions
Nearby residents will see crews on site and may hear noise associated with the use of excavators, auger drills, and hydrovac equipment. Lane closures and pedestrian detours will also be required.

If you have any questions about this work, please email info@fcgp.ca or call the 24/7 phone line: 1-844-815-6149. For more information about the Project, please visit pattullobridgereplacement.ca.

Contact the Project



24/7 Phone Line
1-844-815-6149



Project Information
pattullobridgereplacement.ca
pattullobridgeproject@gov.bc.ca



Work on the Project
bcib.ca
info@bcib.ca