

*MCTS Western NAVWARN Issuing Desk*

*Website: [nis.ccg-gcc.gc.ca](http://nis.ccg-gcc.gc.ca)*

*Phone: 250-627-3070*

*Email: [NAVWARN.MCTSPrinceRupert@innav.gc.ca](mailto:NAVWARN.MCTSPrinceRupert@innav.gc.ca)*

---

# Navigational Warning Request

**Organization Name and Contact Number:** Fraser River Pile and Dredge (GP) Inc.

**Site Name and Contact Number:**

FRPD – Jamie Longmuir – Superintendent – [jlongmuir@frpd.com](mailto:jlongmuir@frpd.com) – 604-839-5880

FRPD – Shane Steele – Superintendent – [ssteele@frpd.com](mailto:ssteele@frpd.com) – 778-789-8454

FRPD – Raveen Kang – Senior Project Manager – [rkang@frpd.com](mailto:rkang@frpd.com) – 604-619-8221

FRPD – Mike Logan – Senior Project Manager – [mlogan@frpd.com](mailto:mlogan@frpd.com) – 604-617-1541

FRPD – Joe Lagos – Health and Safety Coordinator – [jlagos@frpd.com](mailto:jlagos@frpd.com) – 778-873-6725

**Start Date and Time:** March 1, 2021 (12:01 a.m.)

**End Date and Time:** June 2021

**Location of Activity:**

Fraser River upstream of the New Westminster Rail Bridge approximate Latitude 49 12' 30", Longitude 122 53' 32". S1 Pier of the new Fraser River bridge.

**Brief Description of Work:**

No Works. S1 piles partially installed at the in-river working window closure.

P1 - 49°12'28.58306"N; 122°53'33.37670"W

P4 - 49°12'28.76294"N; 122°53'33.22971"W

P7 - 49°12'28.94279"N; 122°53'33.08278"W

Works to recommence in Summer 2021.

Storage barges may be moored at the Project site along the tie-up piles. Crew access float to remain.

**Hours of Operation:**

N/A

**Vessels on Site:**

Storage barges may be moored alongside the tie-up piles.

**VHF Channel Monitored:**

Mariners to monitor normal channels for the specific area of the river.

**Special Requests or Additional Information:**

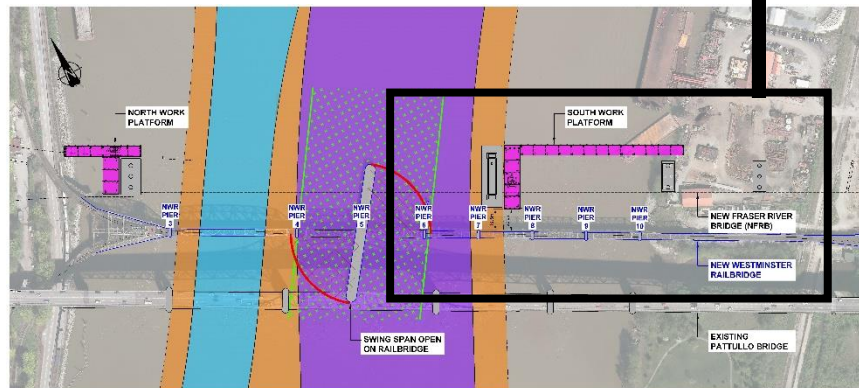
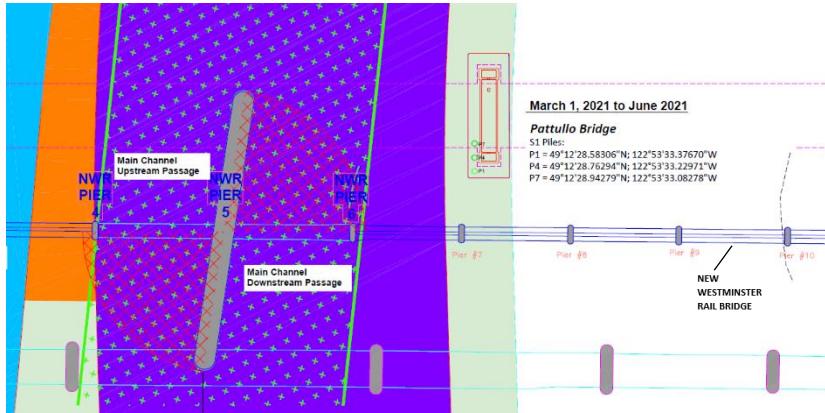
Reference is made to the attached staging drawing showing the location of P1, P4 and P7 in relation to other infrastructure and navigation channels.

Tug support will not be available following the in-water working window closure.

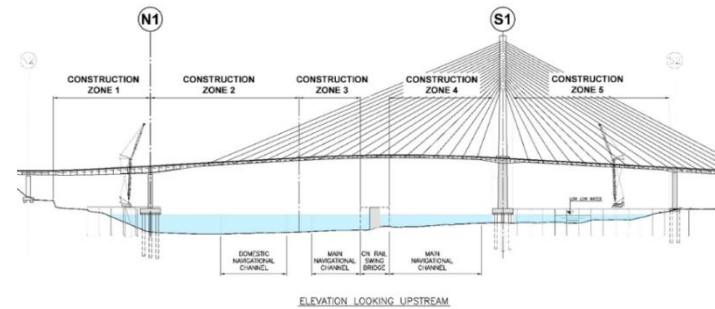


# NAVWARN – March 1, 2021

## CONSTRUCTION ACTIVITIES PLANNED:




## NAVIGATIONAL RESTRICTIONS:





Marine Construction Weekly Update										
Week of March 1-7, 2021	Zone 1 Pier N1 to New Westminster Shoreline		Zone 2 Navigational Channel		Zone 3 Main Navigational Channel Upstream		Zone 4 Main Navigational Channel Downstream		Zone 5 Pier S1 to New Westminster Shoreline	
Day	Time	Status	Time	Status	Time	Status	Time	Status	Time	Status
Monday, March 1	24hr	Open to All Marine Traffic	24hr	Open to All Marine Traffic	24hr	Open to All Marine Traffic	24hr	Open to All Marine Traffic	24hr	Open with restricted manageability due to construction activities
Tuesday, March 2	24hr	Open to All Marine Traffic	24hr	Open to All Marine Traffic	24hr	Open to All Marine Traffic	24hr	Open to All Marine Traffic	24hr	Open with restricted manageability due to construction activities
Wednesday, March 3	24hr	Open to All Marine Traffic	24hr	Open to All Marine Traffic	24hr	Open to All Marine Traffic	24hr	Open to All Marine Traffic	24hr	Open with restricted manageability due to construction activities
Thursday, March 4	24hr	Open to All Marine Traffic	24hr	Open to All Marine Traffic	24hr	Open to All Marine Traffic	24hr	Open to All Marine Traffic	24hr	Open with restricted manageability due to construction activities
Friday, March 5	24hr	Open to All Marine Traffic	24hr	Open to All Marine Traffic	24hr	Open to All Marine Traffic	24hr	Open to All Marine Traffic	24hr	Open with restricted manageability due to construction activities
Saturday, March 6	24hr	Open to All Marine Traffic	24hr	Open to All Marine Traffic	24hr	Open to All Marine Traffic	24hr	Open to All Marine Traffic	24hr	Open with restricted manageability due to construction activities
Sunday, March 7	24hr	Open to All Marine Traffic	24hr	Open to All Marine Traffic	24hr	Open to All Marine Traffic	24hr	Open to All Marine Traffic	24hr	Open with restricted manageability due to construction activities

Open to All Marine Traffic  
 Open with restricted manageability due to construction activities  
 Closed due to construction activity

### Contact the Project


**24/7 Phone Line**  
 1-844-815-6149


**Project Information**  
[pattullobridgereplacement.ca](http://pattullobridgereplacement.ca)  
[pattullobridgeproject@gov.bc.ca](mailto:pattullobridgeproject@gov.bc.ca)


**Marine Channels**  
 74 General Info  
 16 Marine Emergency

06 Marine Contractor  
 69 Tugs and Crews